

TABLE OF CONTENTS

General Notes	2
Roof Structural Details	3
AR0010 – Low Eave, Bypass Girts	3
AR0020 – Low Eave, Inset Girts	5
AR0030 – Low Eave, Flush Girts	7
AR0040 – High Eave, Bypass Girts.....	9
AR0060 – High Eave, Inset Girts.....	11
AR0070 – High Eave, Flush Girts.....	13
AR0080 – Ridge, Bypass Girts.....	15
AR0090 – Ridge, Inset Girts.....	17
AR0100 – Ridge, Flush Girts.....	19
AR0110 – Low Eave with Gable Below, Bypass Girts.....	21
AR0120 – Low Eave with Gable Below, Inset Girts	23
AR0130 – Low Eave with Gable Below, Flush Girts	25
AR0140 – High Eave with Gable Below, Bypass Girts	27
AR0150 – High Eave with Gable Below, Inset Girts	29
AR0160 – High Eave with Gable Below, Flush Girts	31
Classic Roof Trim Details.....	33
FE0010PE – High Eave Future Expansion—Ridge.....	33
FE0020PE – Low Eave Future Expansion Roof Step (Wall Panel Remains).....	34
FE0030PE – Low Eave Future Expansion Roof Step (Wall Panel Removed)	35
FE0040PE – Low Eave Future Expansion (Below Eave)	39
FE0050PE – High Eave Future Expansion Roof Step (Wall Panel Remains).....	40
FE0060PE – High Eave Future Expansion Roof Step (Wall Panel Removed).....	40
FE0070PE – High Eave Future Expansion (Below Eave).....	41
CFR Roof Trim Details	43
FE0080PE – High Eave Future Expansion—Ridge.....	43
FE0090PE – Low Eave Future Expansion Roof Step (Wall Panel Remains).....	44
FE0100PE – Low Eave Future Expansion Roof Step (Wall Panel Removed)	45
FE0110PE – Low Eave Future Expansion.....	46
FE0120PE – High Eave Future Expansion Roof Step (Wall Panel Remains).....	48
FE0130PE – High Eave Future Expansion Roof Step (Wall Panel Removed).....	49
FE0140PE – High Eave Future Expansion (Below Eave).....	50

4.8.1**GENERAL NOTES**

The future expansion details in this section are shown assuming the future expansion will be a Valley Steel Buildings Systems structure.

1. NBS will design the new structure for the future expansion based on the future expansion information given by the customer on the “Future Expansion Supplemental Form”. It is imperative that Valley Steel receives all applicable information regarding the future expansion so that Valley Steel understands and provides material for the correct conditions. Valley Steel Building Systems will not be responsible for the design of the new structure if the future expansion information changes after the new structure is already fabricated and/or erected.
2. The new building can be prepped for the primary structural connections of the future expansion, including but not limited to the high eave parapet support, mezzanine connections, and crane steel. The new building can be designed for future mezzanine and crane loads as specified in the order documents.
3. If the new building has a Post and Beam endwall condition, the future expansion from this endwall can only be accomplished by placing a new frame directly adjacent (within 2'-8") of the Post and Beam frame.



PRODUCT & ENGINEERING MANUAL

LAST REVISION

DATE: 02/09/01

BY: CDM RJF

ROOF STRUCTURAL DETAILS

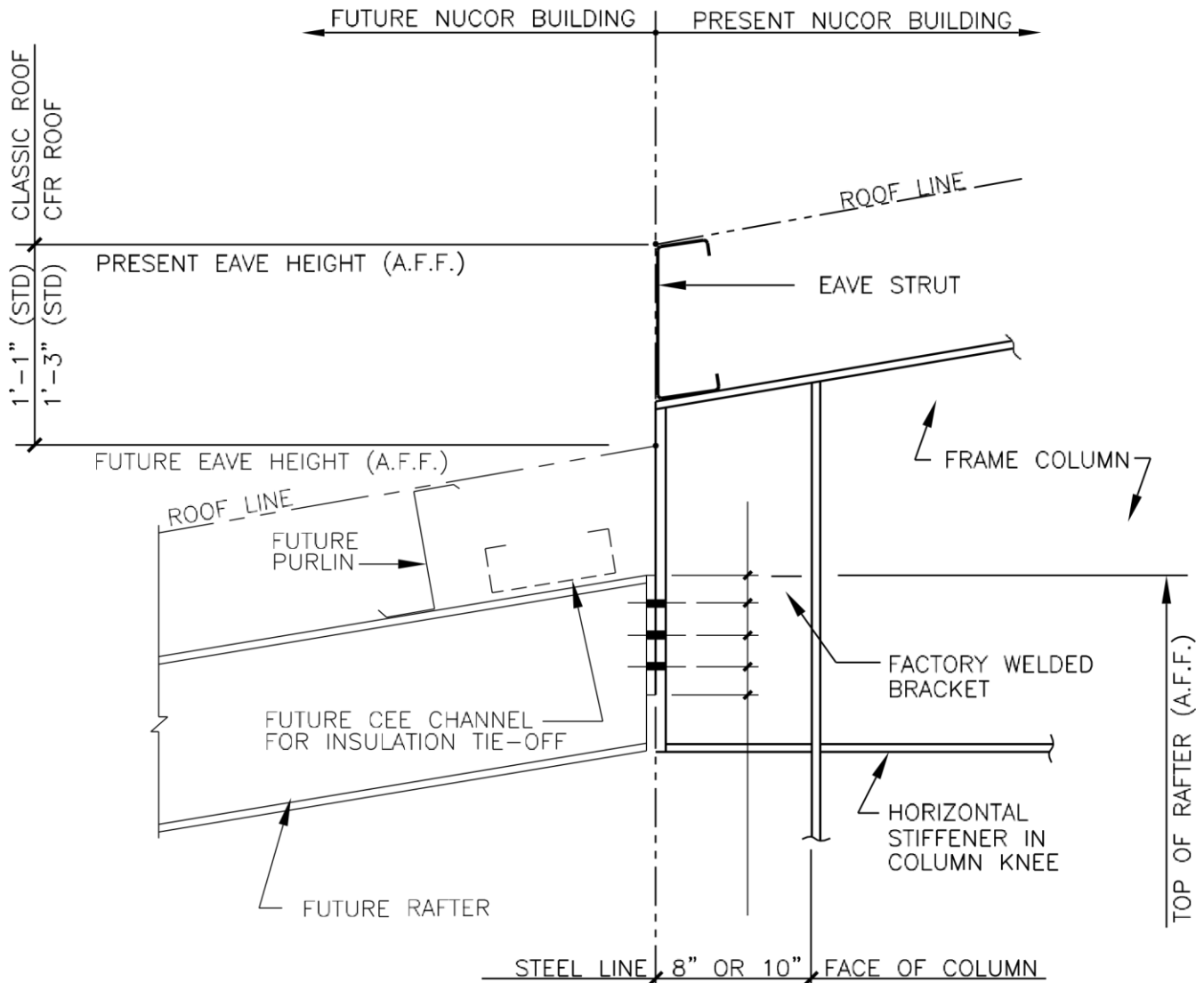
AR0010 – LOW EAVE, BYPASS GIRTS

LAST REVISION DETAIL NAME IF APPLICABLE

DATE: 02/16/15 **4.8.3**

BY: AK CHK: EGB

AR0090.DWG



LOW-EAVE FUTURE EXPANSION

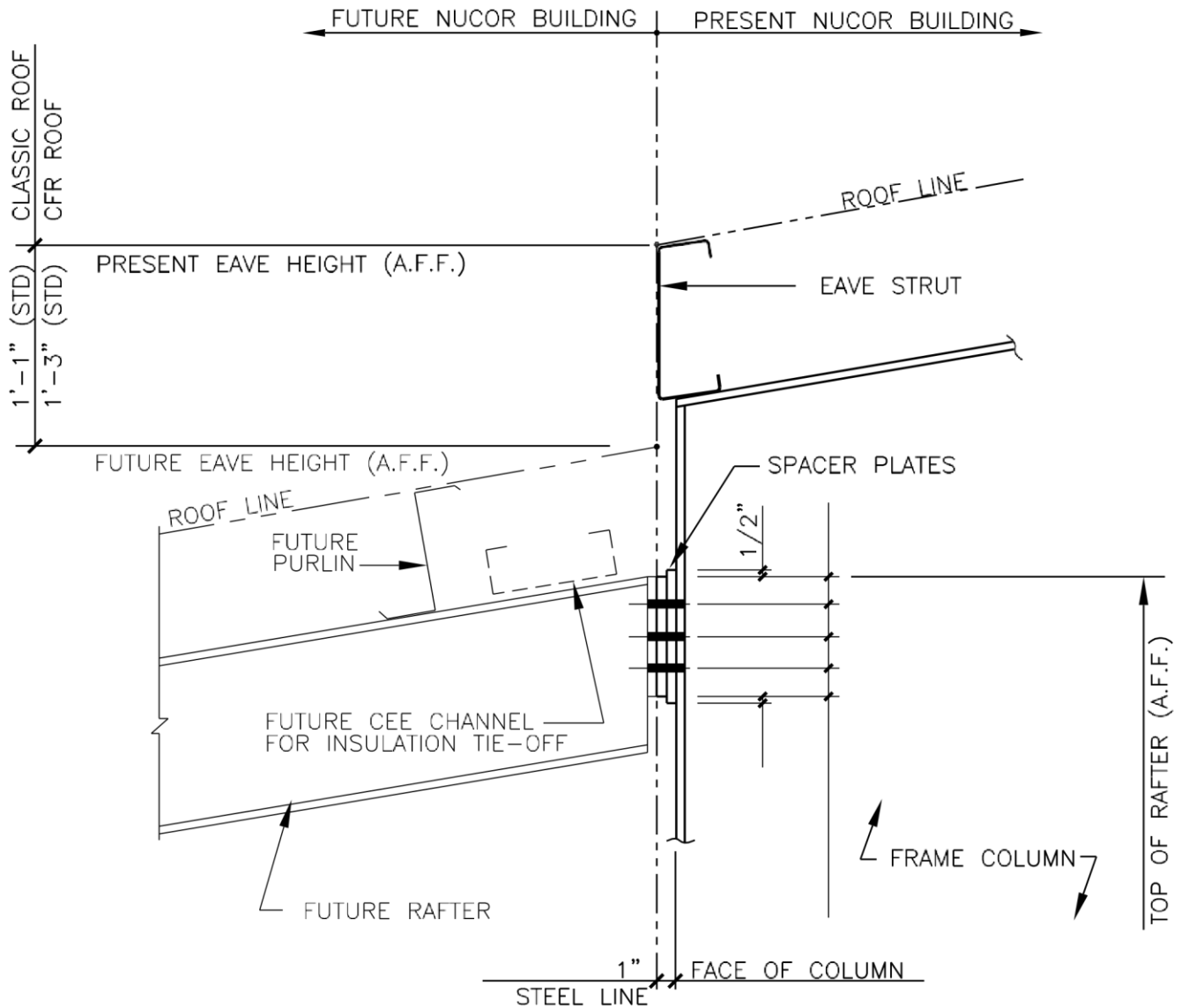
BYPASS GIRTS
REFERENCE ERECTOR NOTE FOR TYPICAL WASHER REQUIREMENTS

AR0010

CHK:

4.8.4

AR0020 – LOW EAVE, INSET GIRTS



LOW-EAVE FUTURE EXPANSION

INSET GIRTS
REFERENCE ERECTOR NOTE FOR TYPICAL WASHER REQUIREMENTS

AR0020

LAST REVISION DETAIL

DATE: 02/16/15 **4.8.6**

BY: AK CHK: EGB

NAME IF APPLICABLE

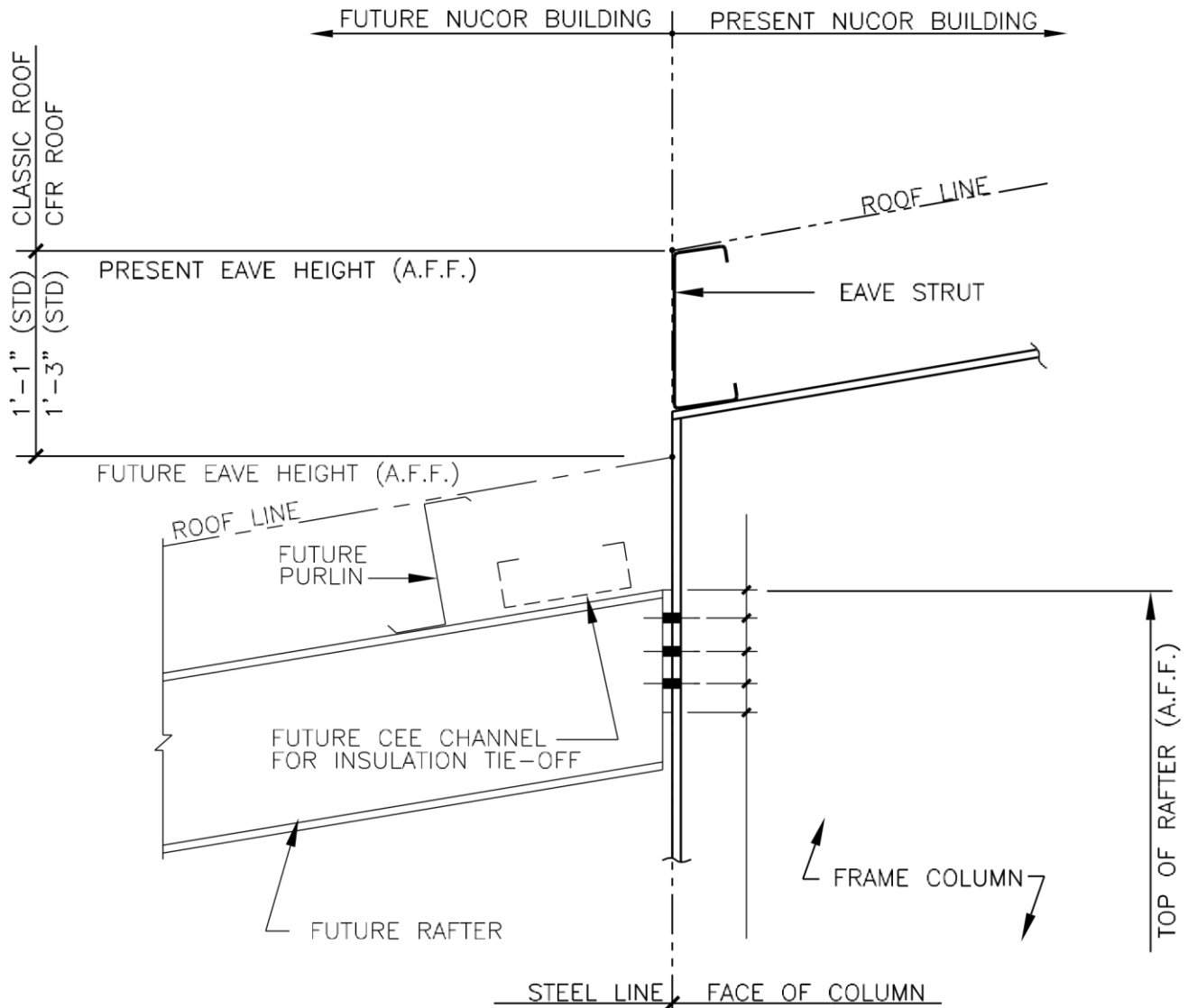
AR0090.DWG



PRODUCT & ENGINEERING MANUAL

AR0030 – LOW EAVE, FLUSH GIRTS

LAST REVISION <u>DETAIL</u>	<u>NAME IF APPLICABLE</u>
DATE: <u>02/16/15</u> 4.8.7	
BY: <u>AK</u> CHK: <u>EGB</u>	AR0090.DWG



LOW-EAVE FUTURE EXPANSION

FLUSH GIRTS
REFERENCE ERECTOR NOTE FOR TYPICAL WASHER REQUIREMENTS

AR0030

LAST REVISION DETAIL

DATE: 02/16/15 **4.8.8**

BY: AK CHK: EGB

NAME IF APPLICABLE

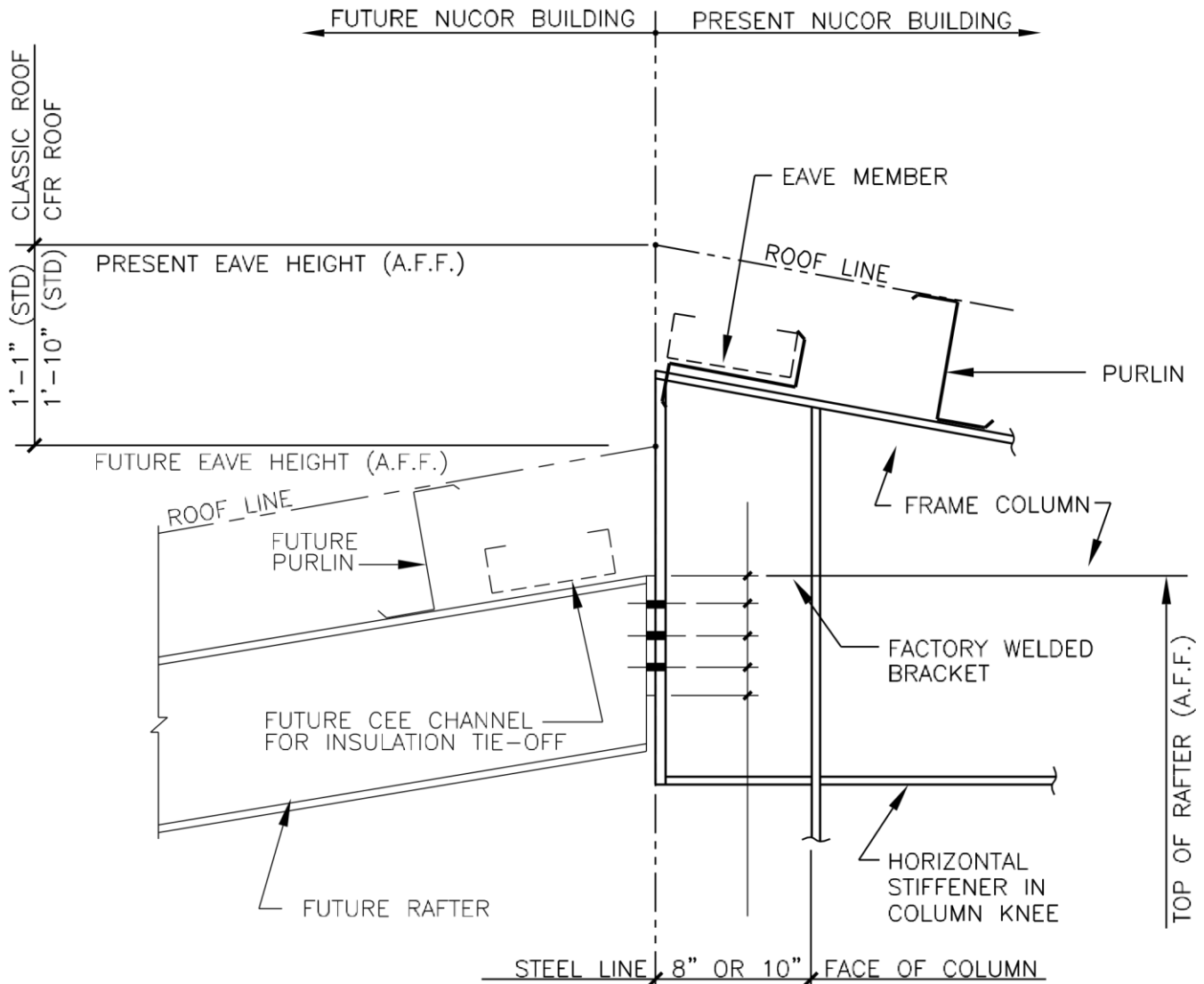
AR0090.DWG



PRODUCT & ENGINEERING MANUAL

AR0040 – HIGH EAVE, BYPASS GIRTS

LAST REVISION <u>DETAIL</u>	<u>NAME IF APPLICABLE</u>
DATE: <u>02/16/15</u> 4.8.9	
BY: <u>AK</u> CHK: <u>EGB</u>	AR0090.DWG



HIGH-EAVE FUTURE EXPANSION

BYPASS GIRTS
REFERENCE ERECTOR NOTE FOR TYPICAL WASHER REQUIREMENTS

AR0040

LAST REVISION DETAIL

DATE: 02/16/15 **4.8.10**

BY: AK CHK: EGB

NAME IF APPLICABLE

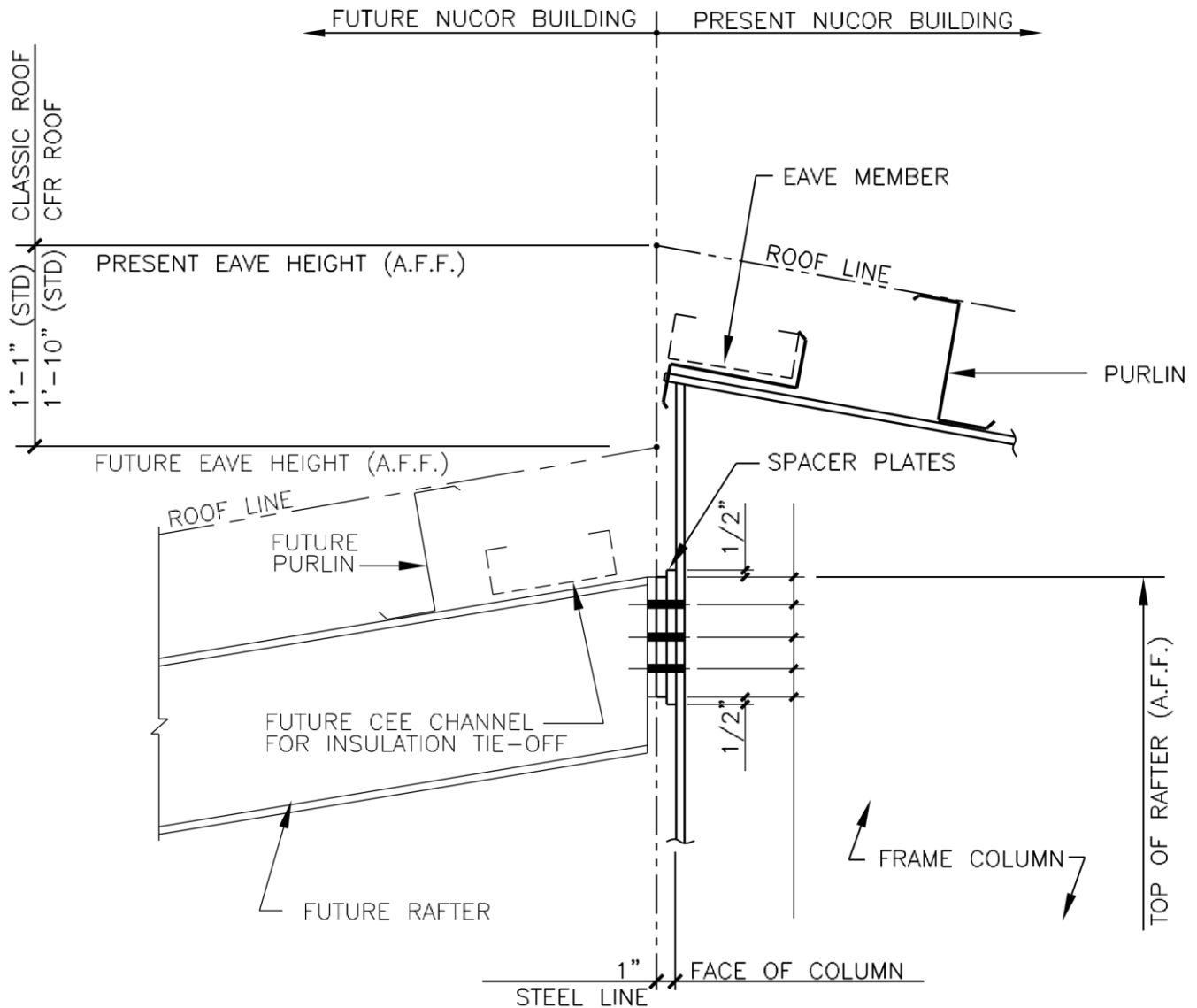
AR0090.DWG



PRODUCT & ENGINEERING MANUAL

AR0060 – HIGH EAVE, INSET GIRTS

LAST REVISION <u>DETAIL</u>	<u>NAME IF APPLICABLE</u>
DATE: <u>02/16/15</u> 4.8.11	
BY: <u>AK</u> CHK: <u>EGB</u>	AR0090.DWG



HIGH-EAVE FUTURE EXPANSION

INSET GIRTS
REFERENCE ERECTOR NOTE FOR TYPICAL WASHER REQUIREMENTS

AR0060

LAST REVISION DETAIL

DATE: 02/16/15 **4.8.12**

BY: AK CHK: EGB

NAME IF APPLICABLE

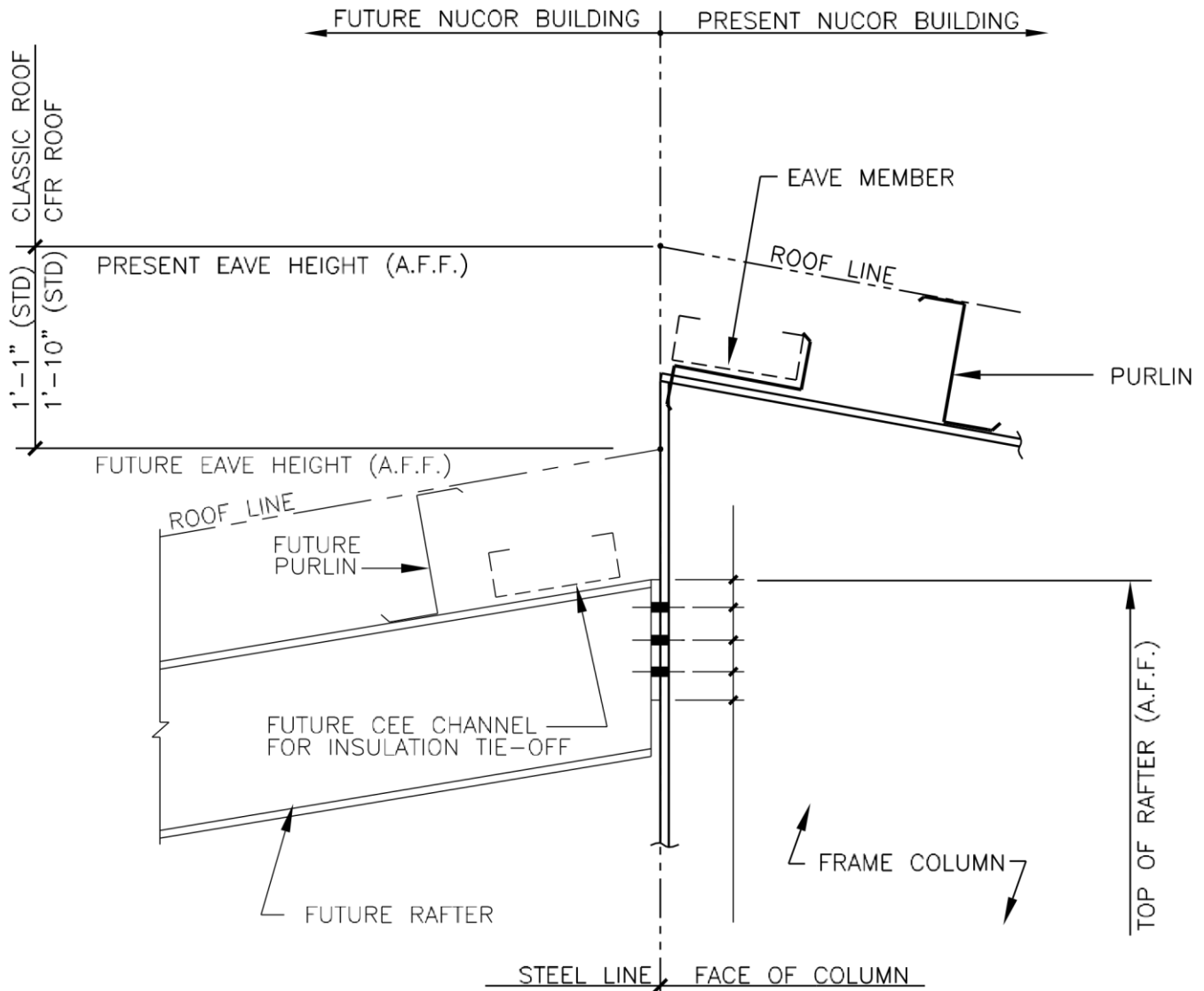
AR0090.DWG



PRODUCT & ENGINEERING MANUAL

AR0070 – HIGH EAVE, FLUSH GIRTS

LAST REVISION <u>DETAIL</u>	<u>NAME IF APPLICABLE</u>
DATE: <u>02/16/15</u> 4.8.13	
BY: <u>AK</u> CHK: <u>EGB</u>	AR0090.DWG



HIGH-EAVE FUTURE EXPANSION

FLUSH GIRTS
REFERENCE ERECTOR NOTE FOR TYPICAL WASHER REQUIREMENTS

AR0070

LAST REVISION DETAIL

DATE: 02/16/15 **4.8.14**

BY: AK CHK: EGB

NAME IF APPLICABLE

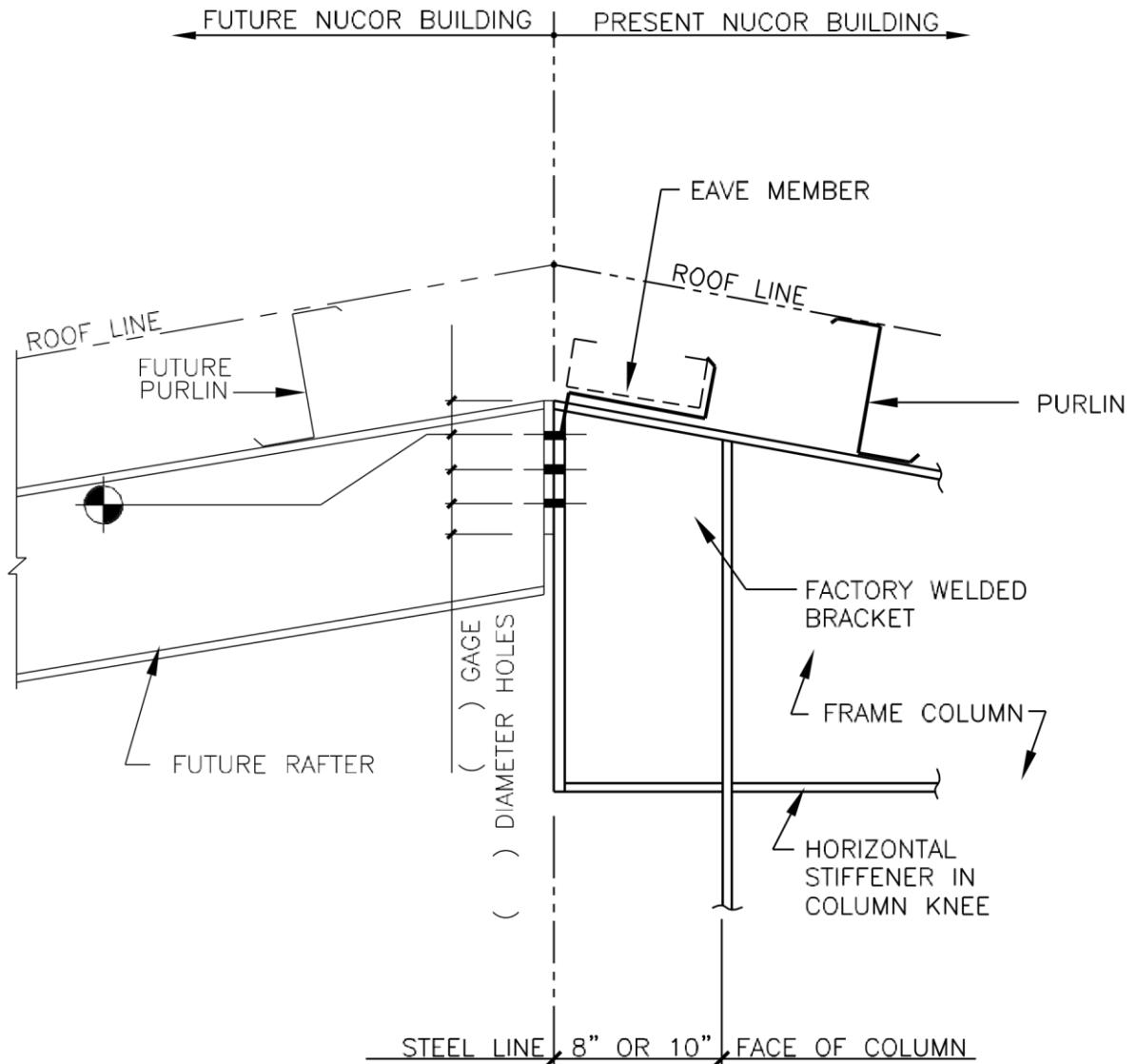
AR0090.DWG



PRODUCT & ENGINEERING MANUAL

AR0080 – RIDGE, BYPASS GIRTS

LAST REVISION <u>DETAIL</u>	<u>NAME IF APPLICABLE</u>
DATE: <u>02/16/15</u> 4.8.15	
BY: <u>AK</u> CHK: <u>EGB</u>	AR0090.DWG



FUTURE EXPANSION AT RIDGE

BYPASS GIRTS

BOLTS FOR FUTURE RAFTER WILL BE SUPPLIED AT TIME OF EXPANSION.

AR0080

LAST REVISION DETAIL

DATE: 02/16/15 **4.8.16**

BY: AK CHK: EGB

NAME IF APPLICABLE

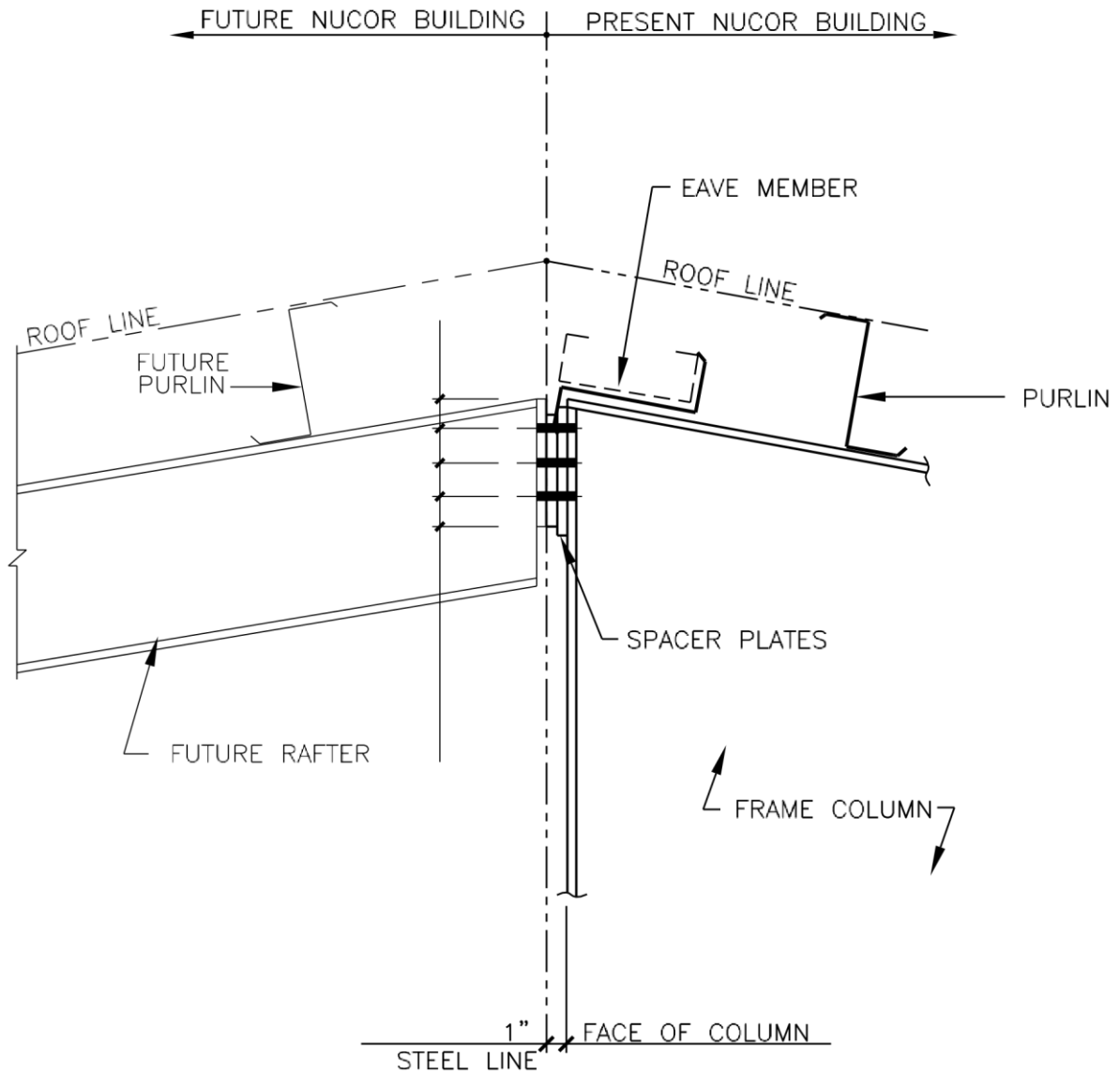
AR0090.DWG



PRODUCT & ENGINEERING MANUAL

AR0090 – RIDGE, INSET GIRTS

LAST REVISION <u>DETAIL</u>	<u>NAME IF APPLICABLE</u>
DATE: <u>02/16/15</u> 4.8.17	
BY: <u>AK</u> CHK: <u>EGB</u>	AR0090.DWG



FUTURE EXPANSION AT RIDGE

INSET GIRTS
REFERENCE ERECTOR NOTE FOR TYPICAL WASHER REQUIREMENTS

AR0090

LAST REVISION DETAIL

DATE: 02/16/15 **4.8.18**

BY: AK CHK: EGB

NAME IF APPLICABLE

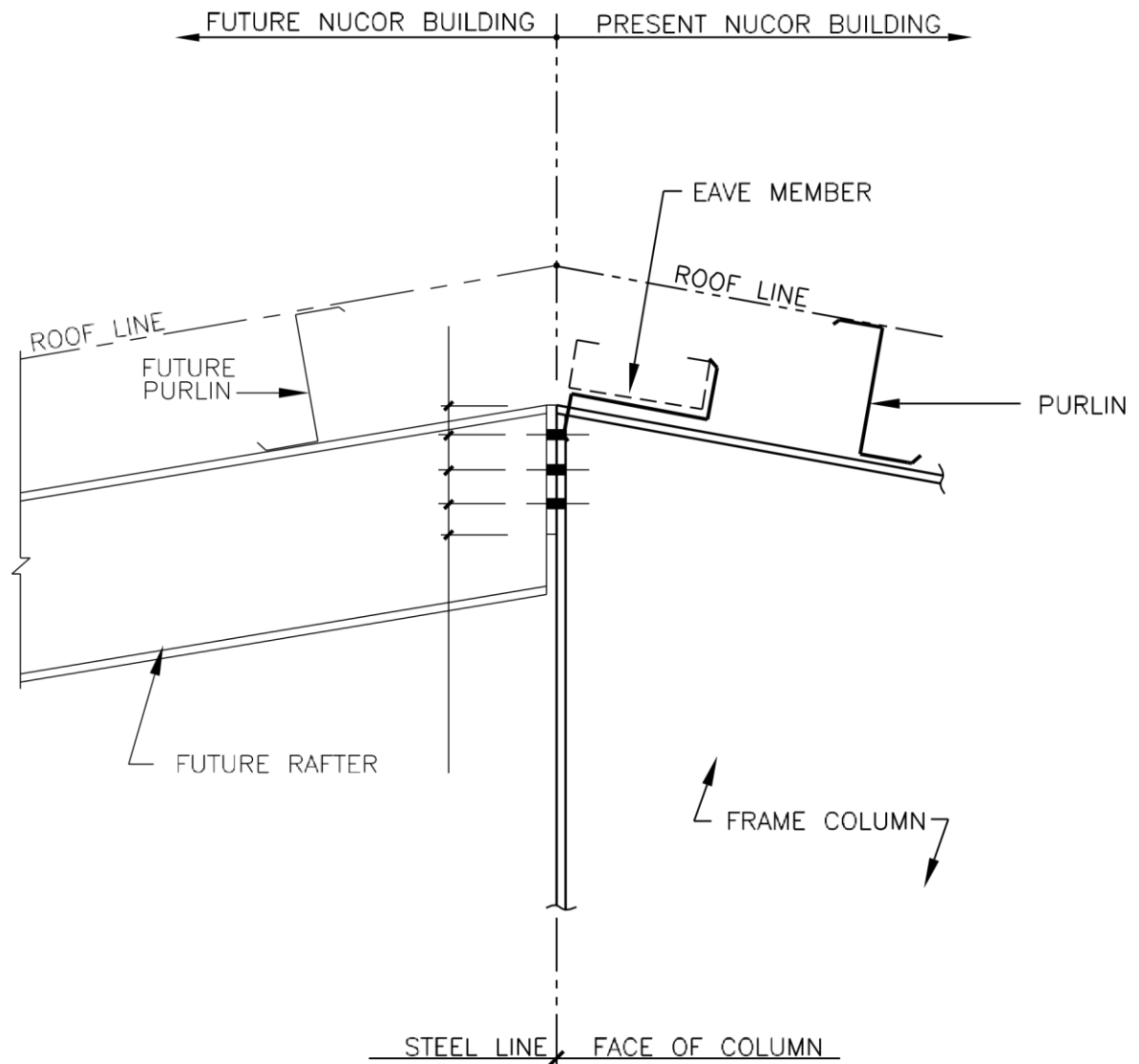
AR0090.DWG



PRODUCT & ENGINEERING MANUAL

AR0100 – RIDGE, FLUSH GIRTS

LAST REVISION <u>DETAIL</u>	<u>NAME IF APPLICABLE</u>
DATE: <u>02/16/15</u> 4.8.19	
BY: <u>AK</u> CHK: <u>EGB</u>	AR0090.DWG



FUTURE EXPANSION AT RIDGE

FLUSH GIRTS
REFERENCE ERECTOR NOTE FOR TYPICAL WASHER REQUIREMENTS

AR0100

LAST REVISION DETAIL

DATE: 02/16/15 **4.8.20**

BY: AK CHK: EGB

NAME IF APPLICABLE

AR0090.DWG

AR0110 – LOW EAVE WITH GABLE BELOW, BYPASS GIRTS

LAST REVISION DETAIL

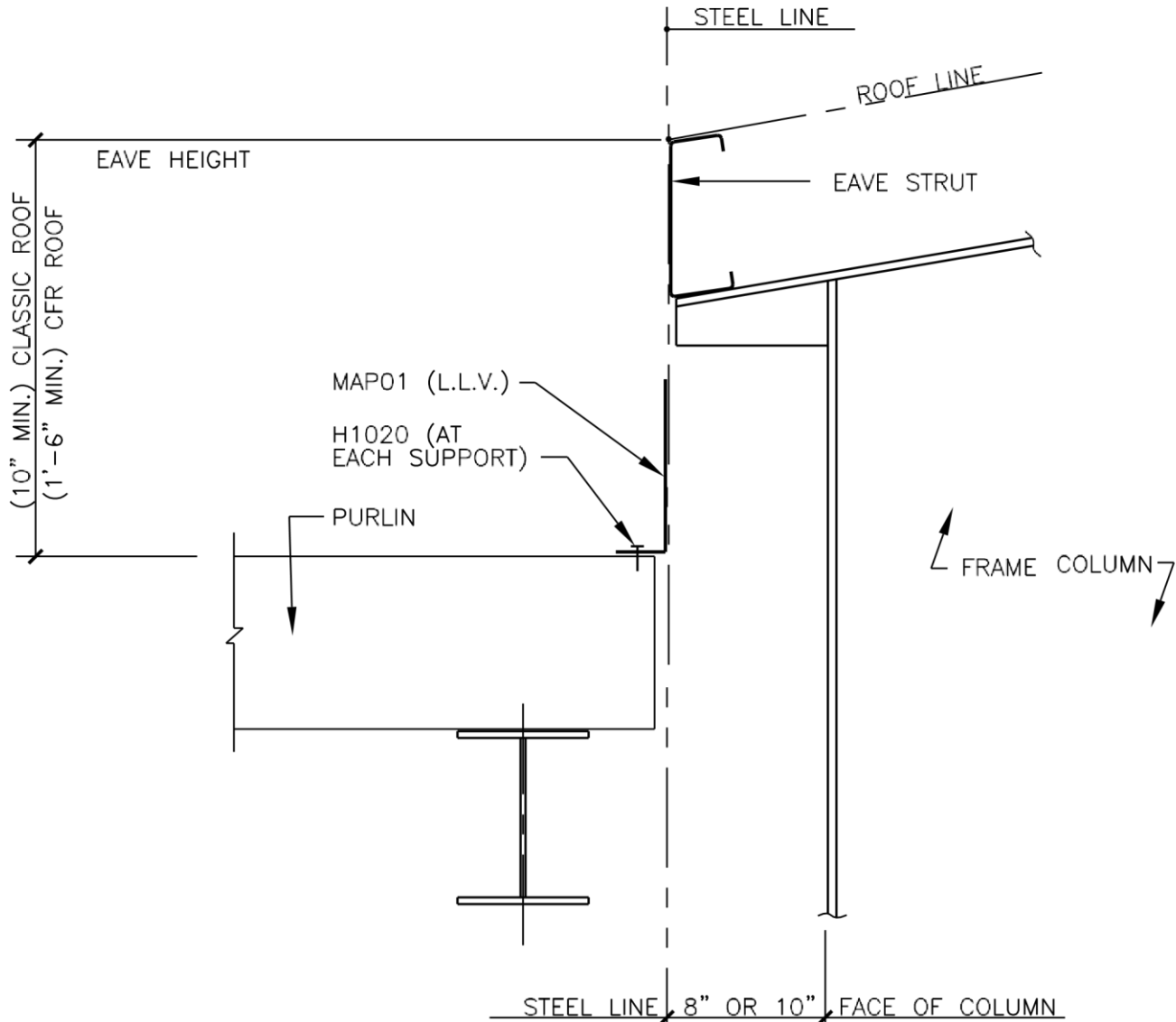
DATE: 02/16/15

BY: AK CHK: EGB

NAME IF APPLICABLE

4.8.21

AR0110.DWG



LOW-EAVE WITH GABLE BLDG. BELOW

BYPASS GIRTS
REFERENCE ERECTOR NOTE FOR TYPICAL WASHER REQUIREMENTS

AR0110

LAST REVISION DETAIL

DATE: 02/16/15

BY: AK CHK: EGB

NAME IF APPLICABLE

4.8.22

AR0110.DWG

AR0120 – LOW EAVE WITH GABLE BELOW, INSET GIRTS

LAST REVISION DETAIL

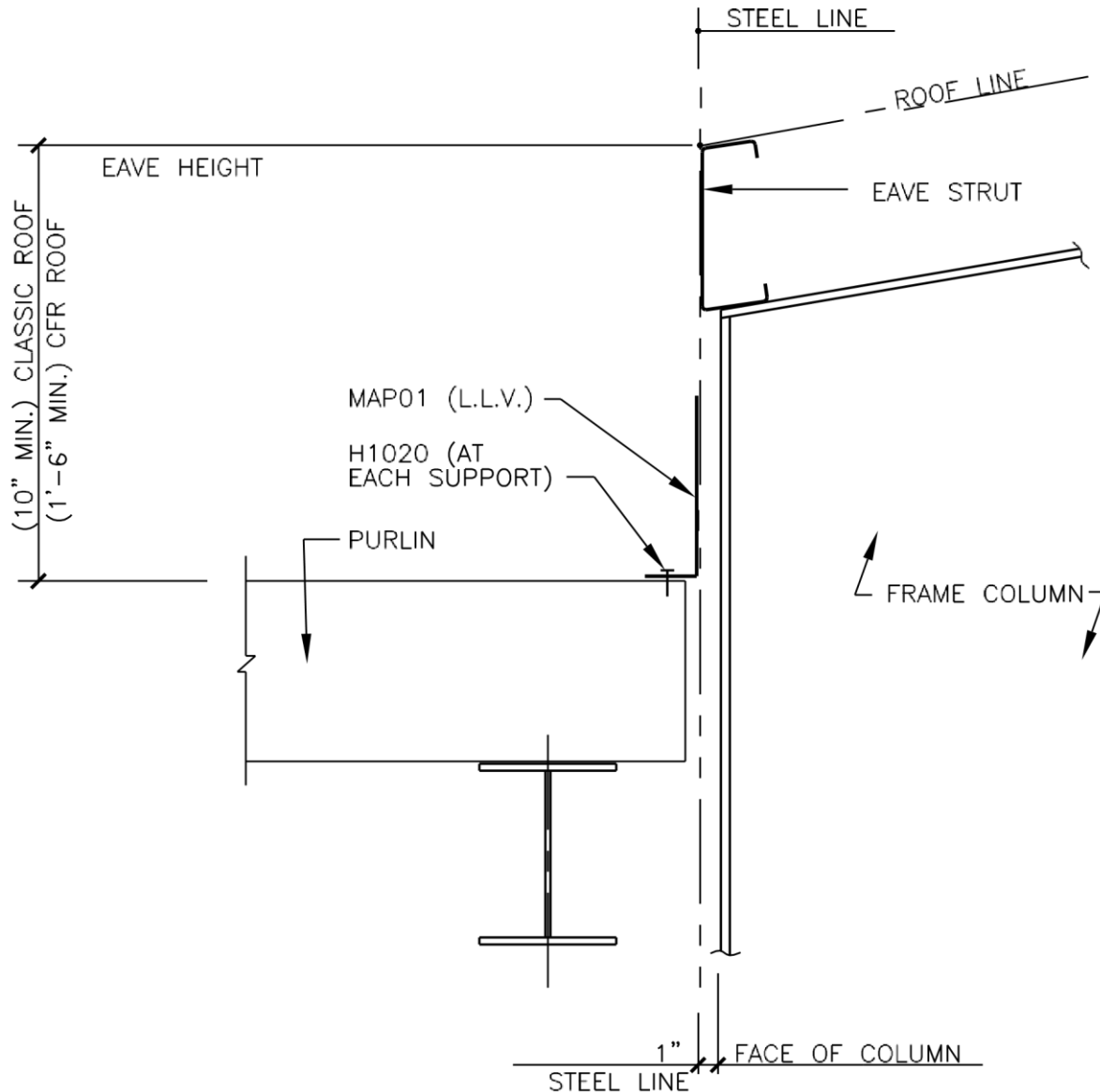
DATE: 02/16/15

BY: AK CHK: EGB

NAME IF APPLICABLE

4.8.23

AR0110.DWG



LOW-EAVE WITH GABLE BLDG. BELOW

INSET GIRTS
REFERENCE ERECTOR NOTE FOR TYPICAL WASHER REQUIREMENTS

AR0120

LAST REVISION DETAIL

DATE: 02/16/15

BY: AK CHK: EGB

NAME IF APPLICABLE

4.8.24

AR0110.DWG

AR0130 – LOW EAVE WITH GABLE BELOW, FLUSH GIRTS

LAST REVISION DETAIL

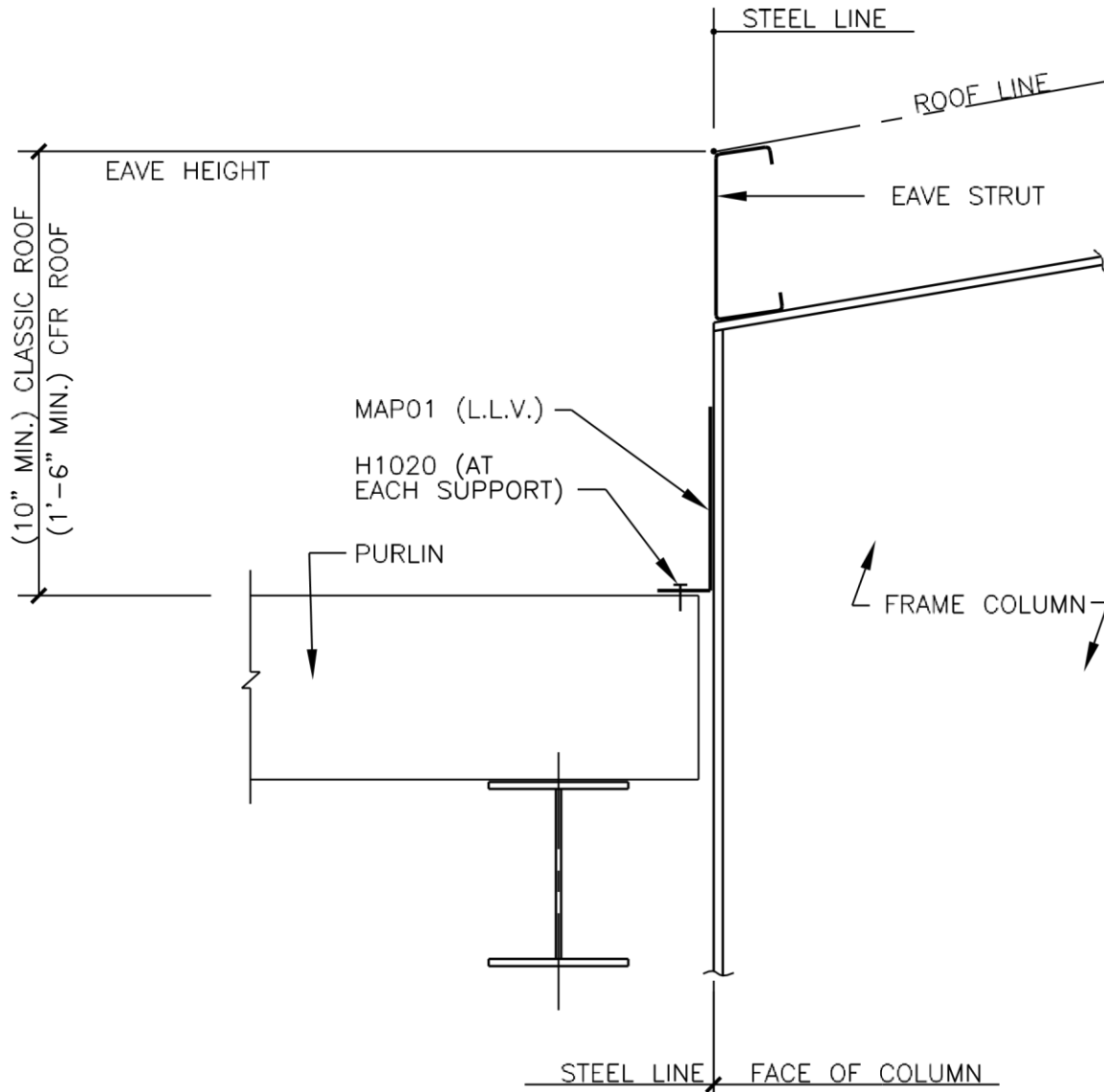
DATE: 02/16/15

BY: AK CHK: EGB

NAME IF APPLICABLE

4.8.25

AR0110.DWG



LOW-EAVE WITH GABLE BLDG. BELOW

FLUSH GIRTS
REFERENCE ERECTOR NOTE FOR TYPICAL WASHER REQUIREMENTS

AR0130

LAST REVISION DETAIL

DATE: 02/16/15

BY: AK CHK: EGB

NAME IF APPLICABLE

4.8.26

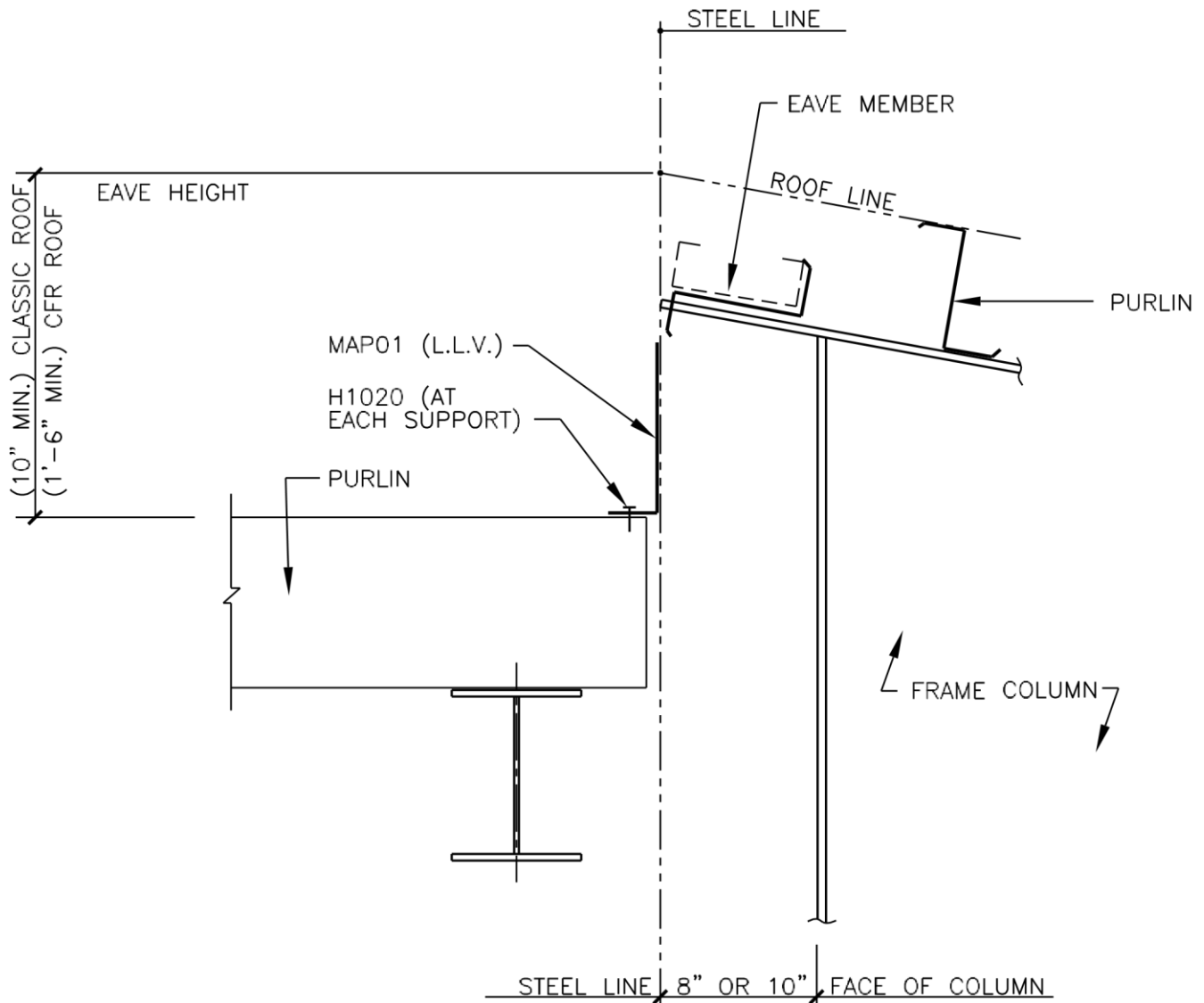
AR0110.DWG



PRODUCT & ENGINEERING MANUAL

AR0140 – HIGH EAVE WITH GABLE BELOW, BYPASS GIRTS

LAST REVISION <u>DETAIL</u>	<u>NAME IF APPLICABLE</u>
DATE: <u>02/16/15</u> 4.8.27	
BY: <u>AK</u> CHK: <u>EGB</u>	AR0140.DWG



HIGH-EAVE WITH GABLE BLDG. BELOW

BYPASS GIRTS
REFERENCE ERECTOR NOTE FOR TYPICAL WASHER REQUIREMENTS

AR0140

LAST REVISION DETAIL

DATE: 02/16/15 **4.8.28**

BY: AK CHK: EGB

NAME IF APPLICABLE

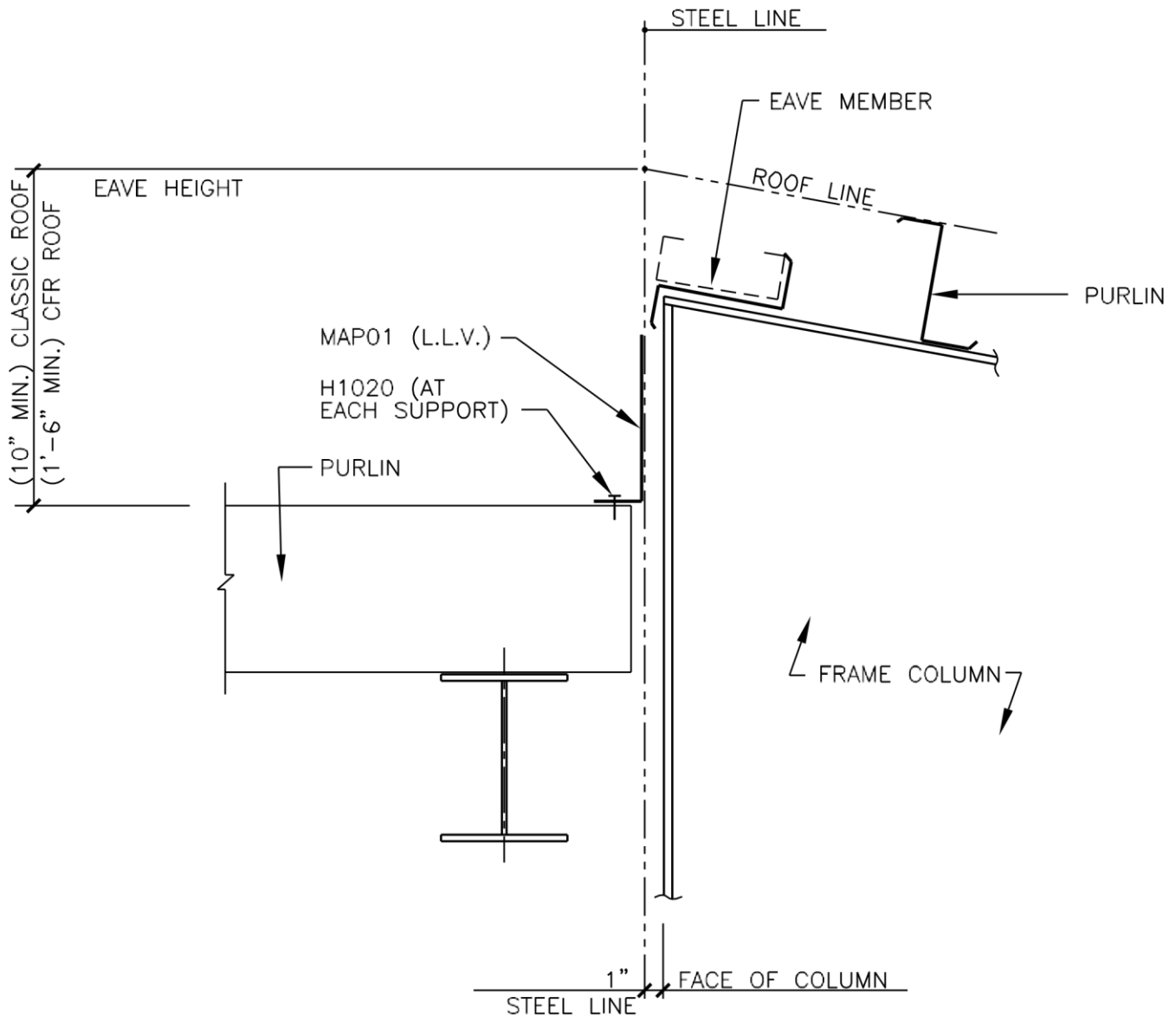
AR0140.DWG



PRODUCT & ENGINEERING MANUAL

AR0150 – HIGH EAVE WITH GABLE BELOW, INSET GIRTS

LAST REVISION <u>DETAIL</u>	<u>NAME IF APPLICABLE</u>
DATE: <u>02/16/15</u> 4.8.29	
BY: <u>AK</u> CHK: <u>EGB</u>	AR0140.DWG



HIGH-EAVE WITH GABLE BLDG. BELOW

INSET GIRTS
REFERENCE ERECTOR NOTE FOR TYPICAL WASHER REQUIREMENTS

AR0150

LAST REVISION DETAIL

DATE: 02/16/15 **4.8.30**

BY: AK CHK: EGB

NAME IF APPLICABLE

AR0140.DWG

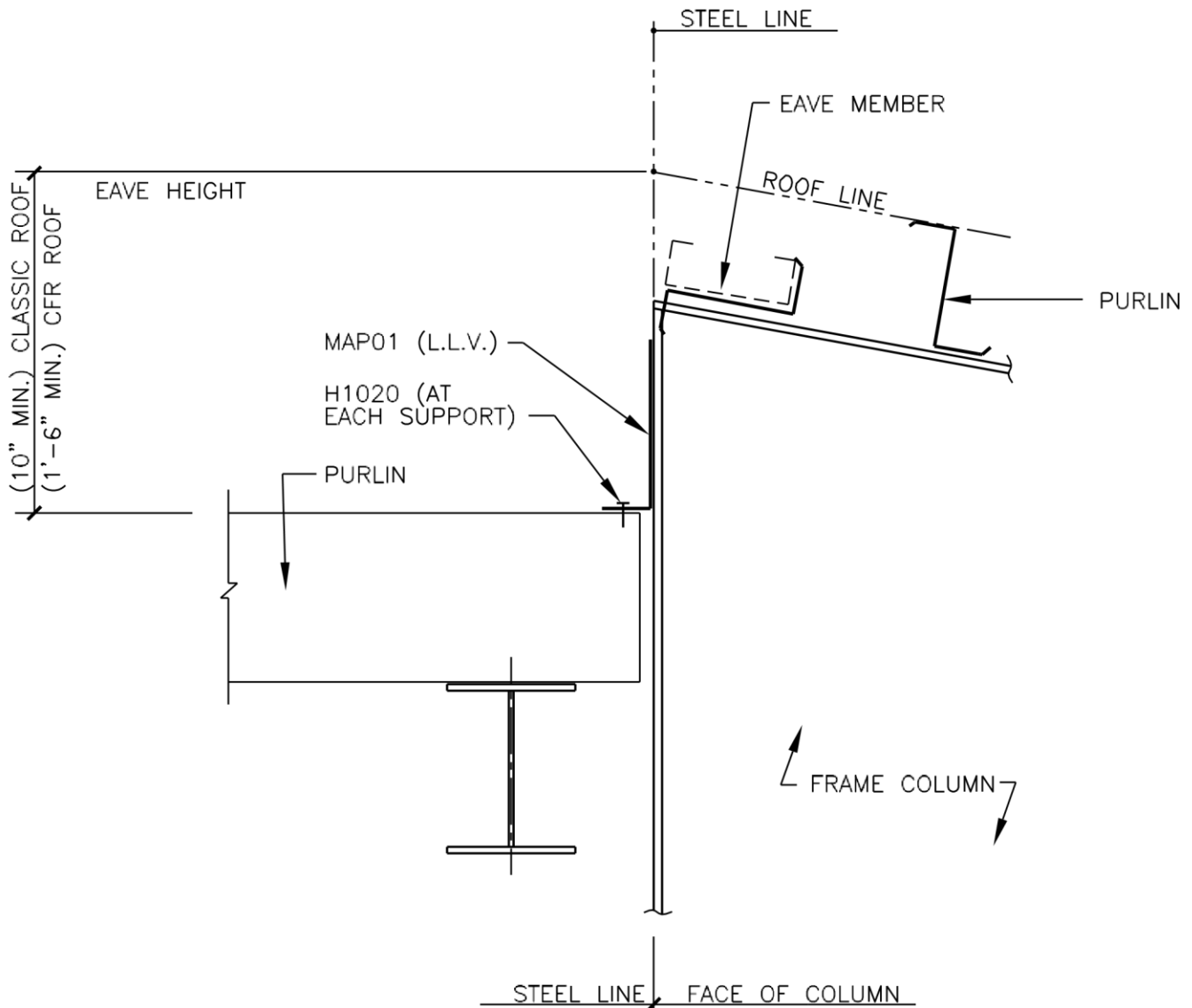


PRODUCT & ENGINEERING MANUAL

AR0160 – HIGH EAVE WITH GABLE BELOW, FLUSH GIRTS

LAST REVISION DETAIL
DATE: 02/16/15 **4.8.31**
BY: AK CHK: EGB

NAME IF APPLICABLE
AR0140.DWG



HIGH-EAVE WITH GABLE BLDG. BELOW

FLUSH GIRTS
REFERENCE ERECTOR NOTE FOR TYPICAL WASHER REQUIREMENTS

AR0160

LAST REVISION DETAIL

DATE: 02/16/15 **4.8.32**

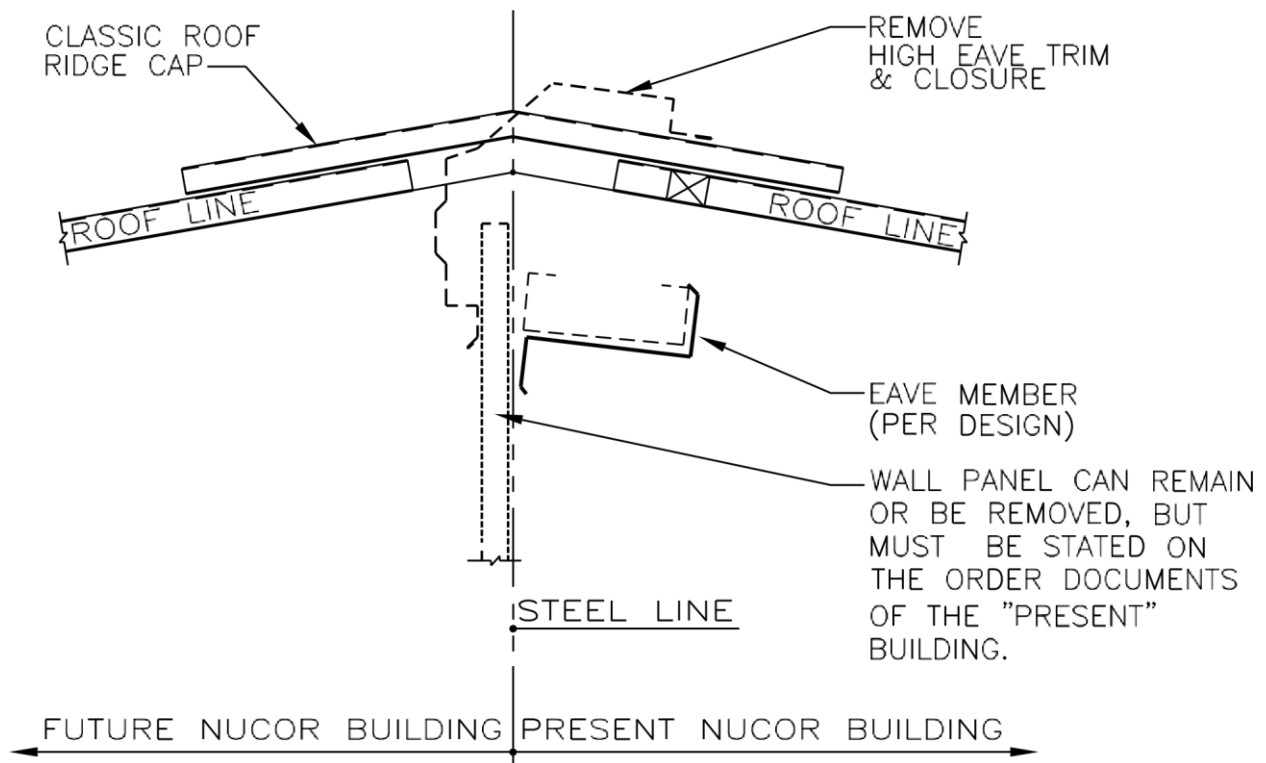
BY: AK CHK: EGB

NAME IF APPLICABLE

AR0140.DWG

CLASSIC ROOF TRIM DETAILS

FE0010PE – HIGH EAVE FUTURE EXPANSION—RIDGE



LAST REVISION

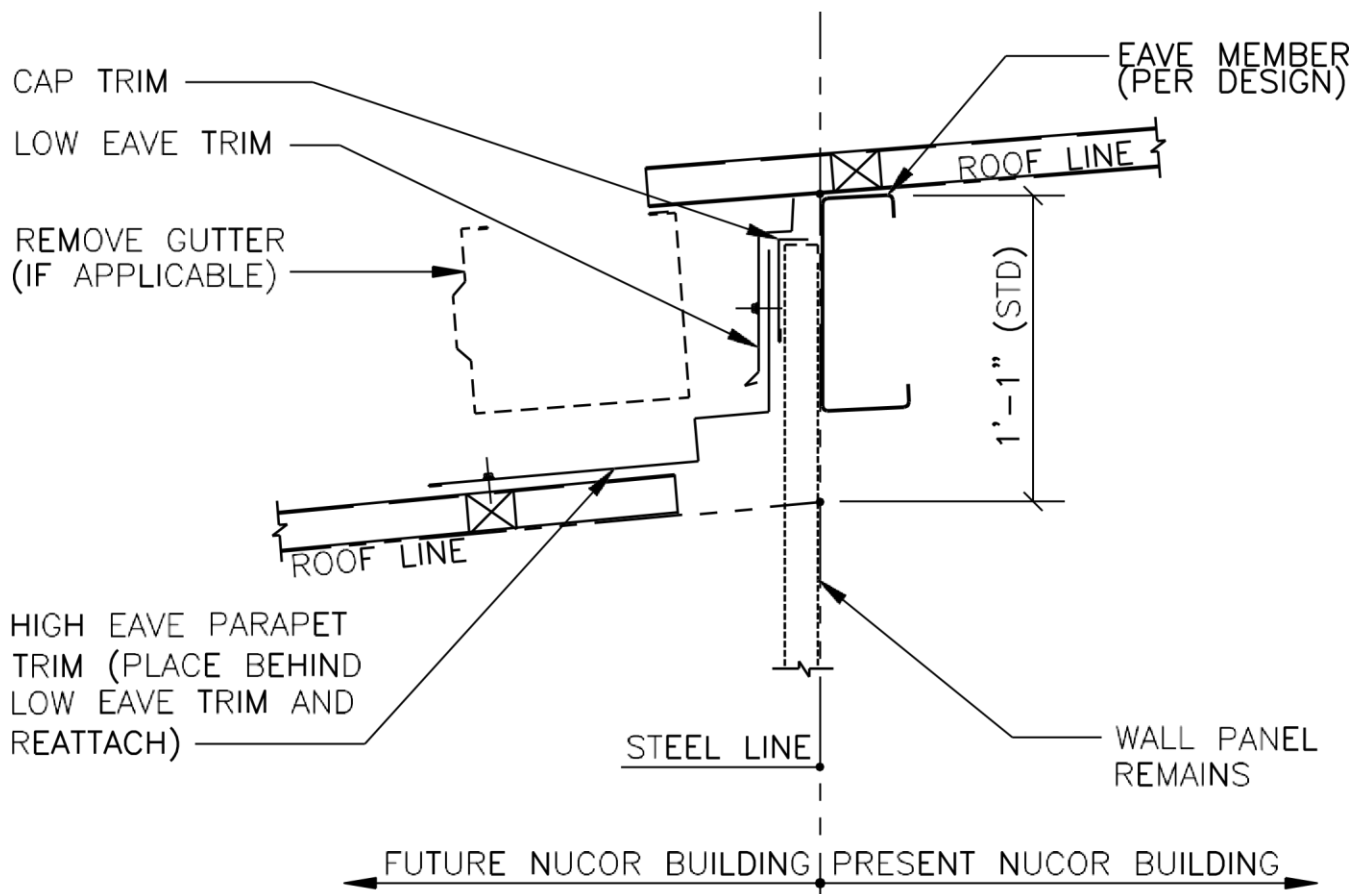
DATE: 04/17/09

BY: AES CHK: KMC

DETAIL NAME IF APPLICABLE

FE0010PE.DWG

FE0020PE – LOW EAVE FUTURE EXPANSION ROOF STEP (WALL PANEL REMAINS)



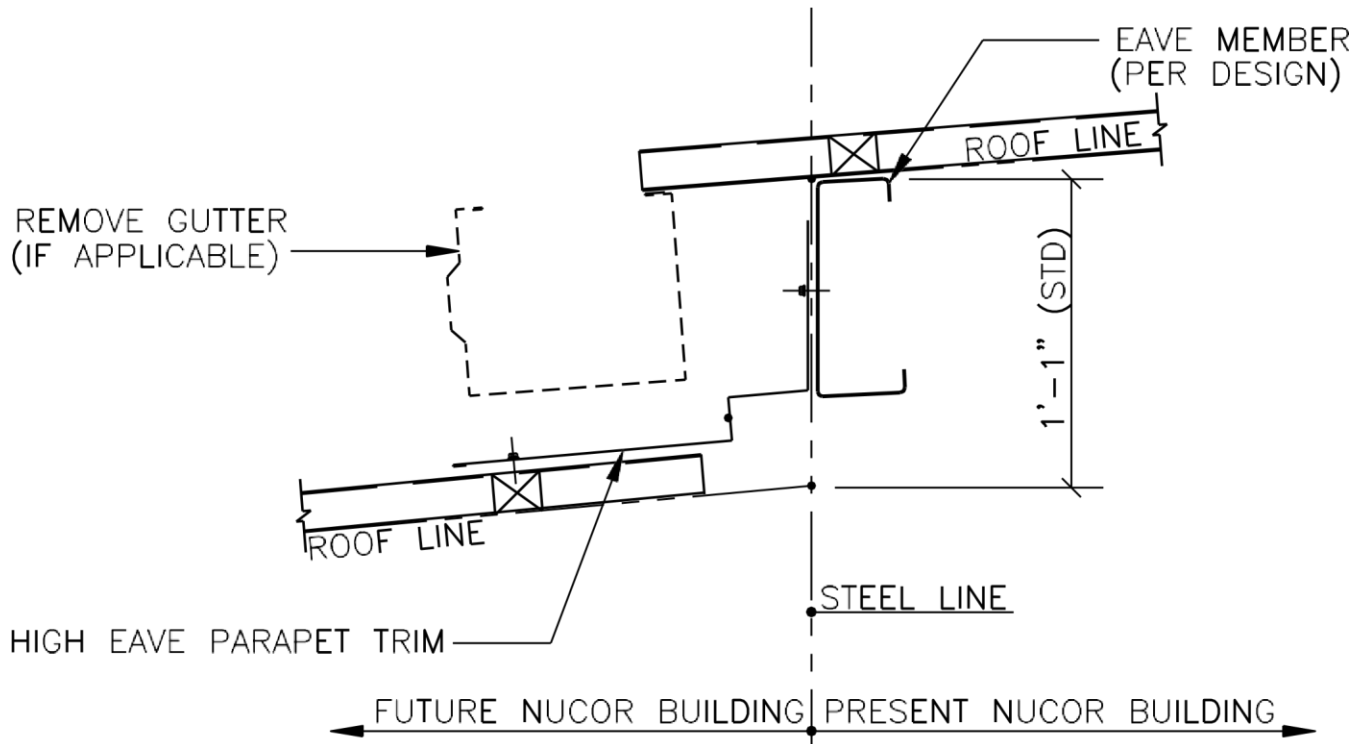
DETAIL APPLICABLE

4.8.34

BY: CHK:

LAST REVISION	<u>DETAIL NAME IF APPLICABLE</u>
DATE: <u>02/09/01</u>	FE0020PE.DWG 4.8.19
BY: <u>CDM</u> CHK: <u>RJF</u>	

FE0030PE – LOW EAVE FUTURE EXPANSION ROOF STEP (WALL PANEL REMOVED)



DETAIL APPLICABLE

4.8.36

BY: CHK:



PRODUCT & ENGINEERING MANUAL

LAST REVISION

DATE: 02/09/01

CDM RJF

NAME IF

FE0030PE.DWG



PRODUCT & ENGINEERING MANUAL

LAST REVISION
DATE: 02/09/01

NAME IF

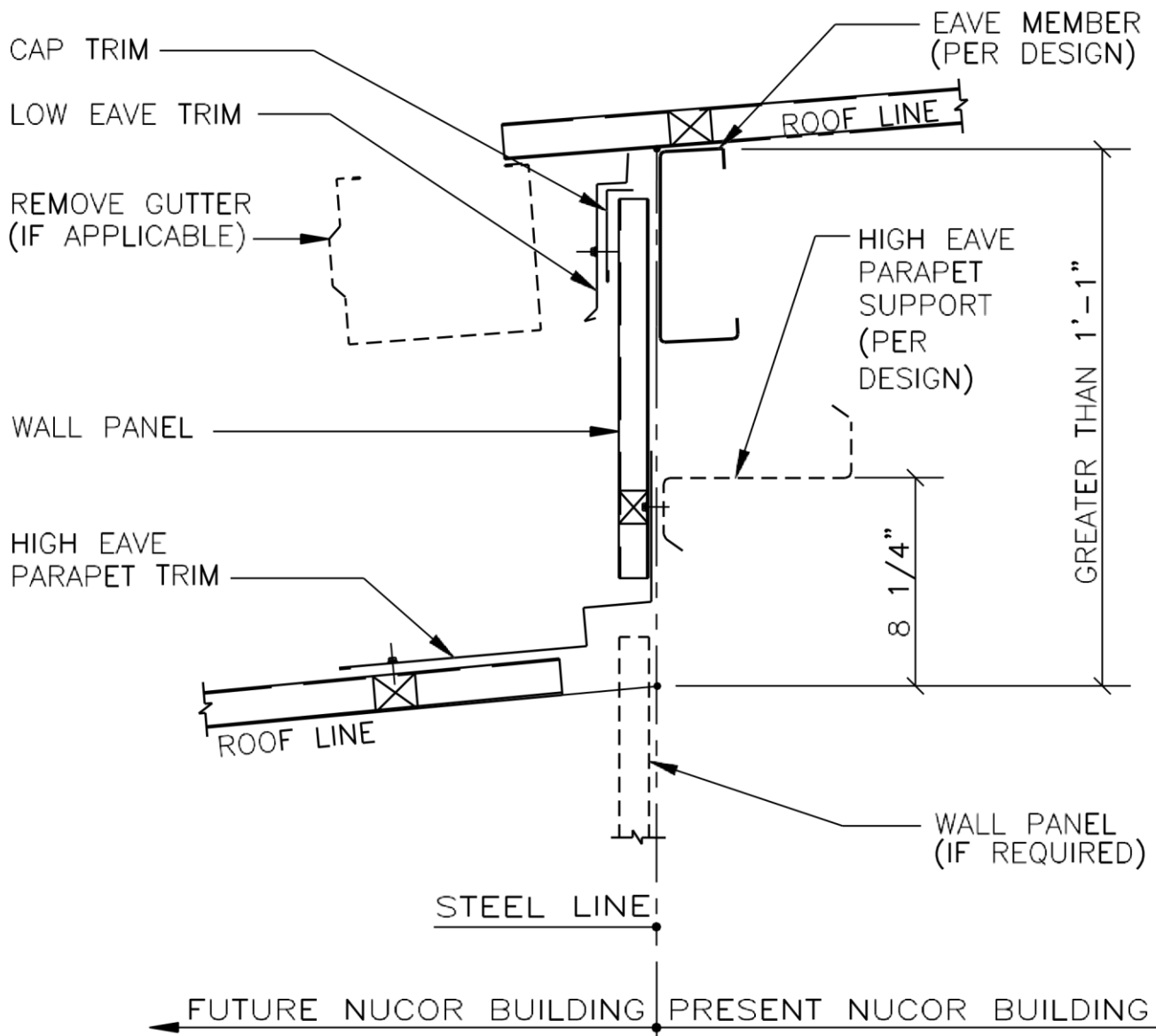
DETAIL APPLICABLE

4.8.38

BY: CHK:

CDM RJF

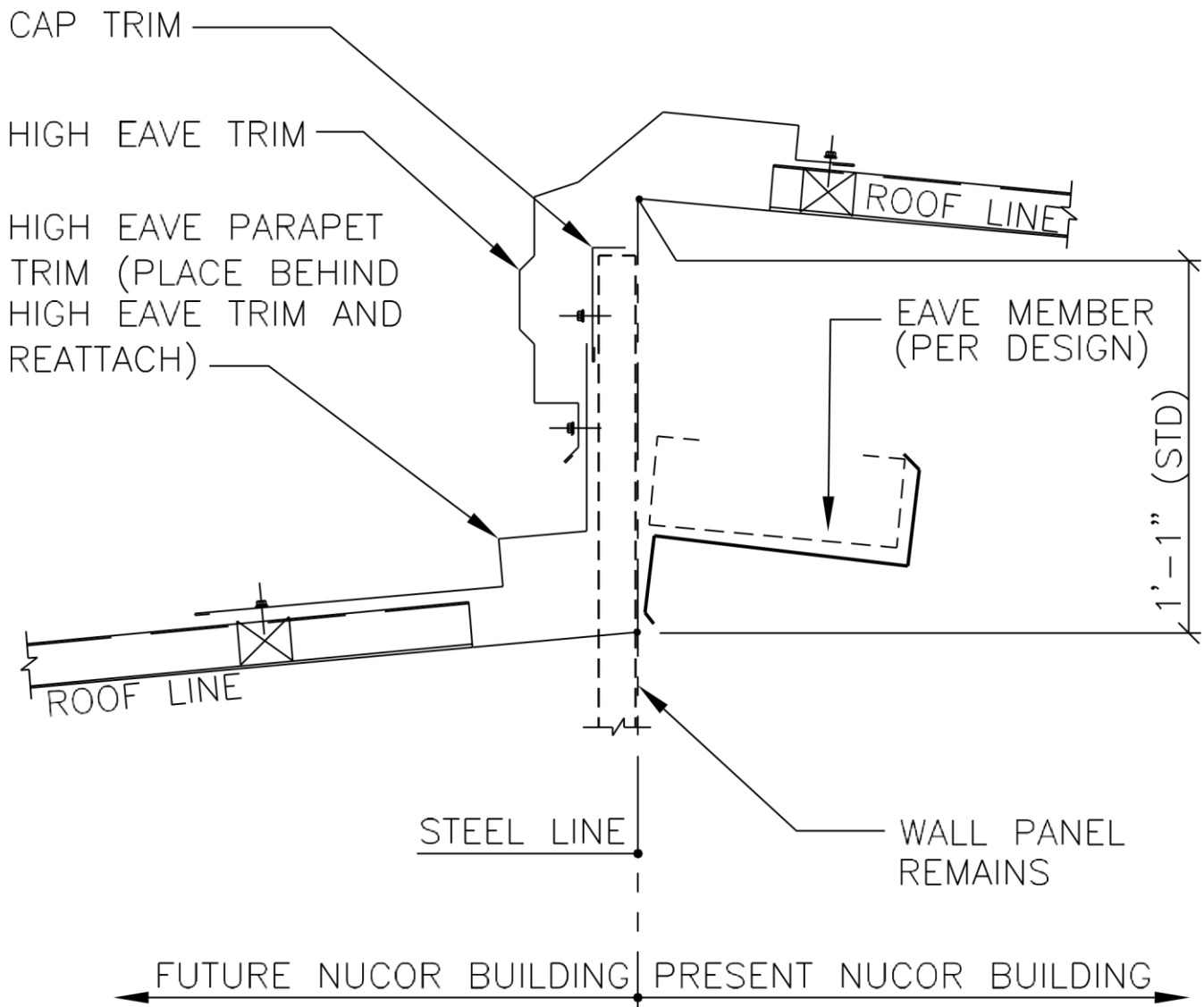
FE0030PE.DWG **FE0040PE – LOW EAVE
FUTURE EXPANSION
(BELOW EAVE)**



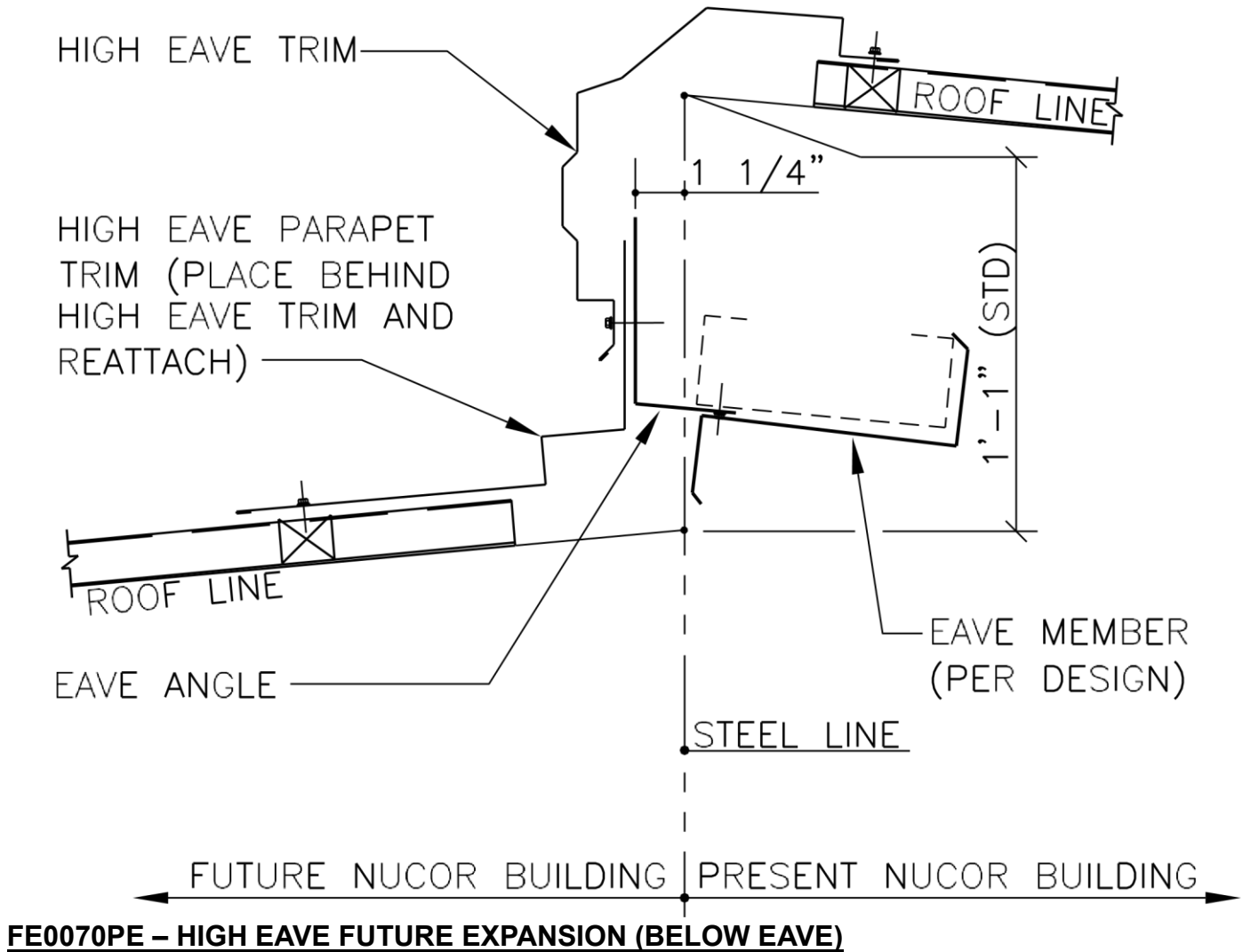
LAST REVISION DETAIL
DATE: 04/17/09 **4.8.39**
BY: AES CHK: KMC

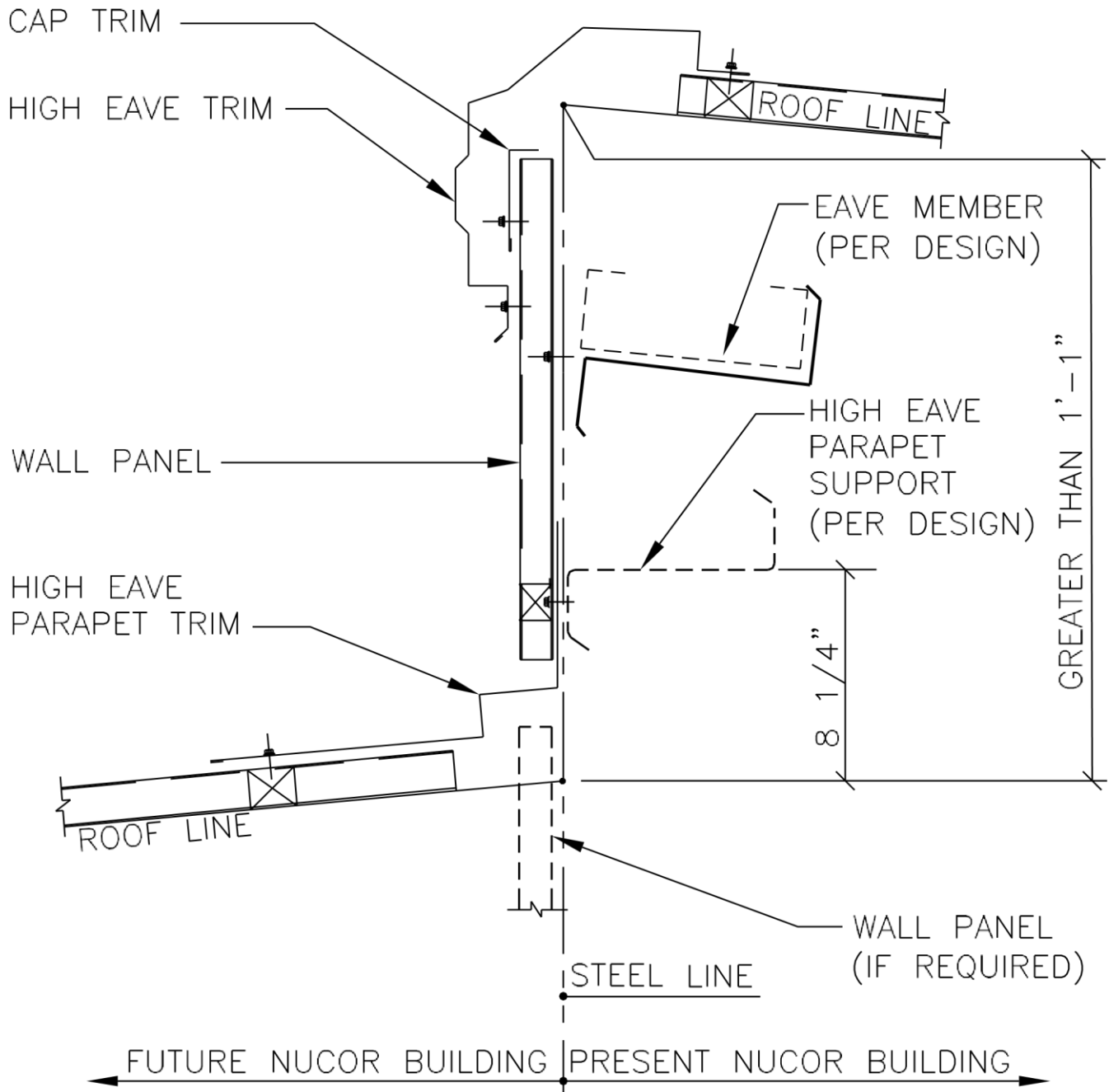
NAME IF APPLICABLE
FE0050PE.DWG

FE0050PE – HIGH EAVE FUTURE EXPANSION ROOF STEP (WALL PANEL REMAINS)



FE0060PE – HIGH EAVE FUTURE EXPANSION ROOF STEP (WALL PANEL REMOVED)





LAST REVISION DETAIL

NAME IF APPLICABLE

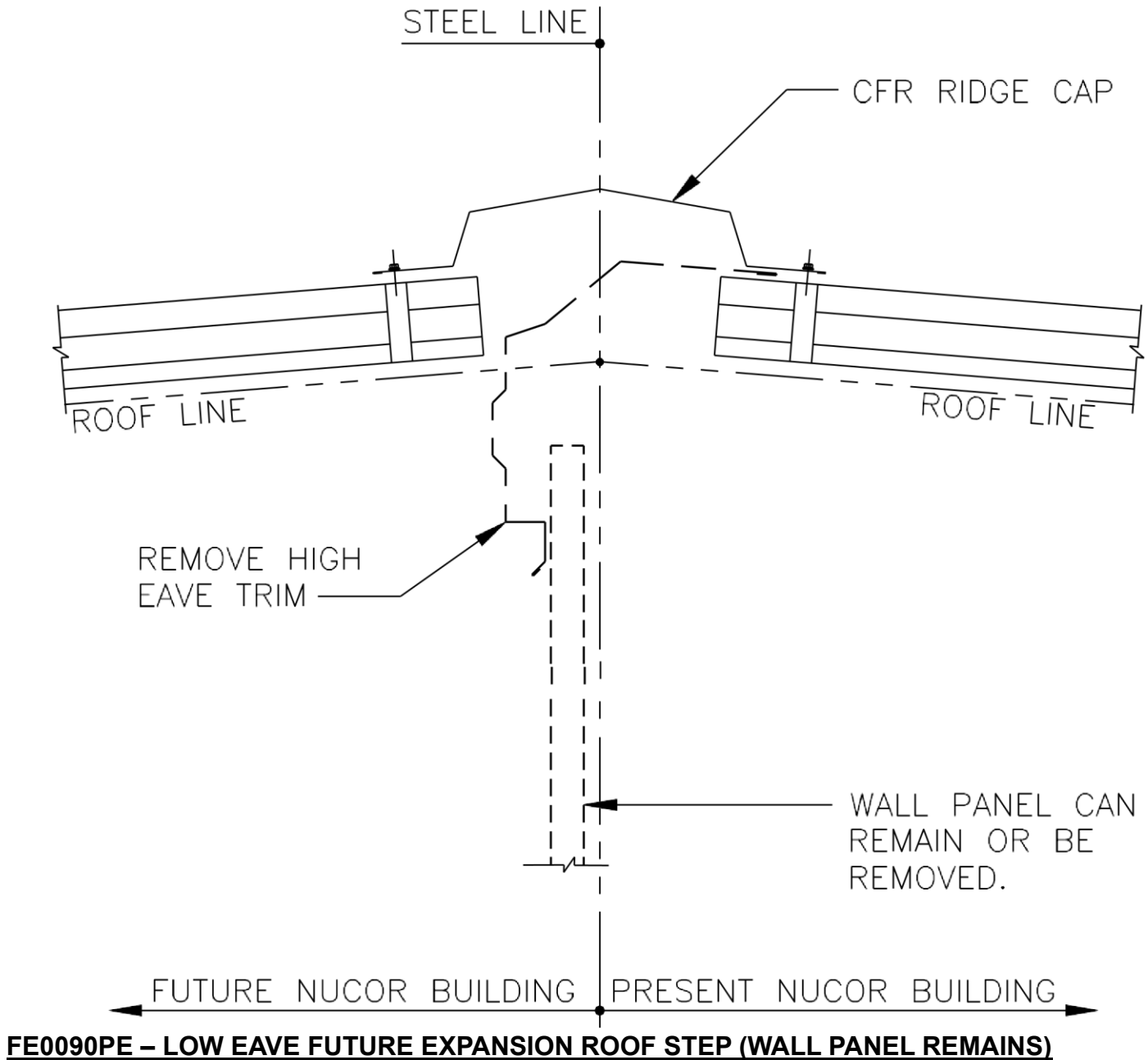
DATE: 04/17/09 **4.8.42**

BY: AES CHK: KMC

FE0050PE.DWG

CFR ROOF TRIM DETAILS

FE0080PE – HIGH EAVE FUTURE EXPANSION—RIDGE



LAST REVISION DETAIL

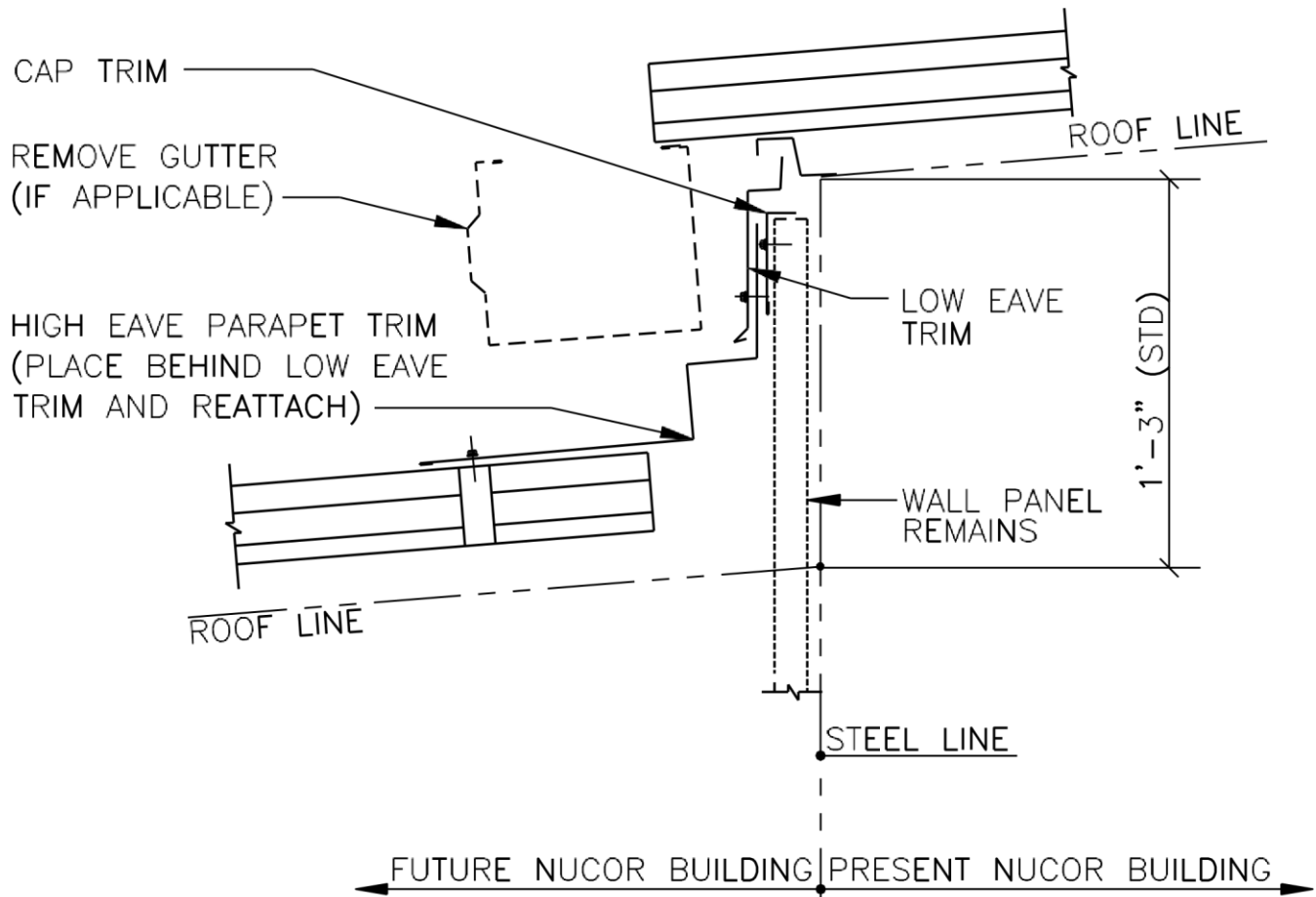
DATE: 02/09/01

BY: CDM CHK: RJF

NAME IF APPLICABLE

4.8.44

FE0080PE.DWG



FE0100PE – LOW EAVE FUTURE EXPANSION ROOF STEP (WALL PANEL REMOVED)

LAST REVISION DETAIL

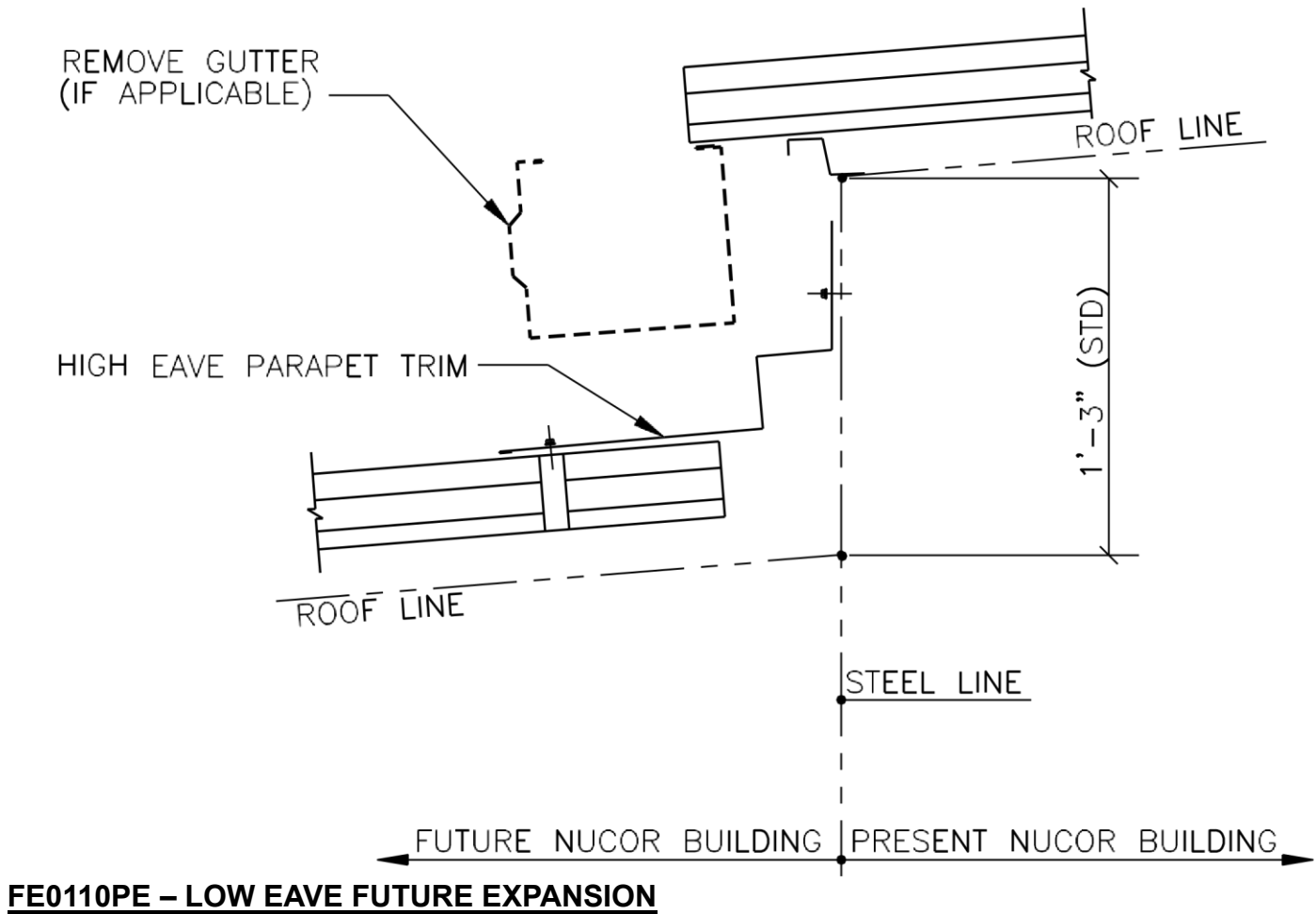
DATE: 02/09/01

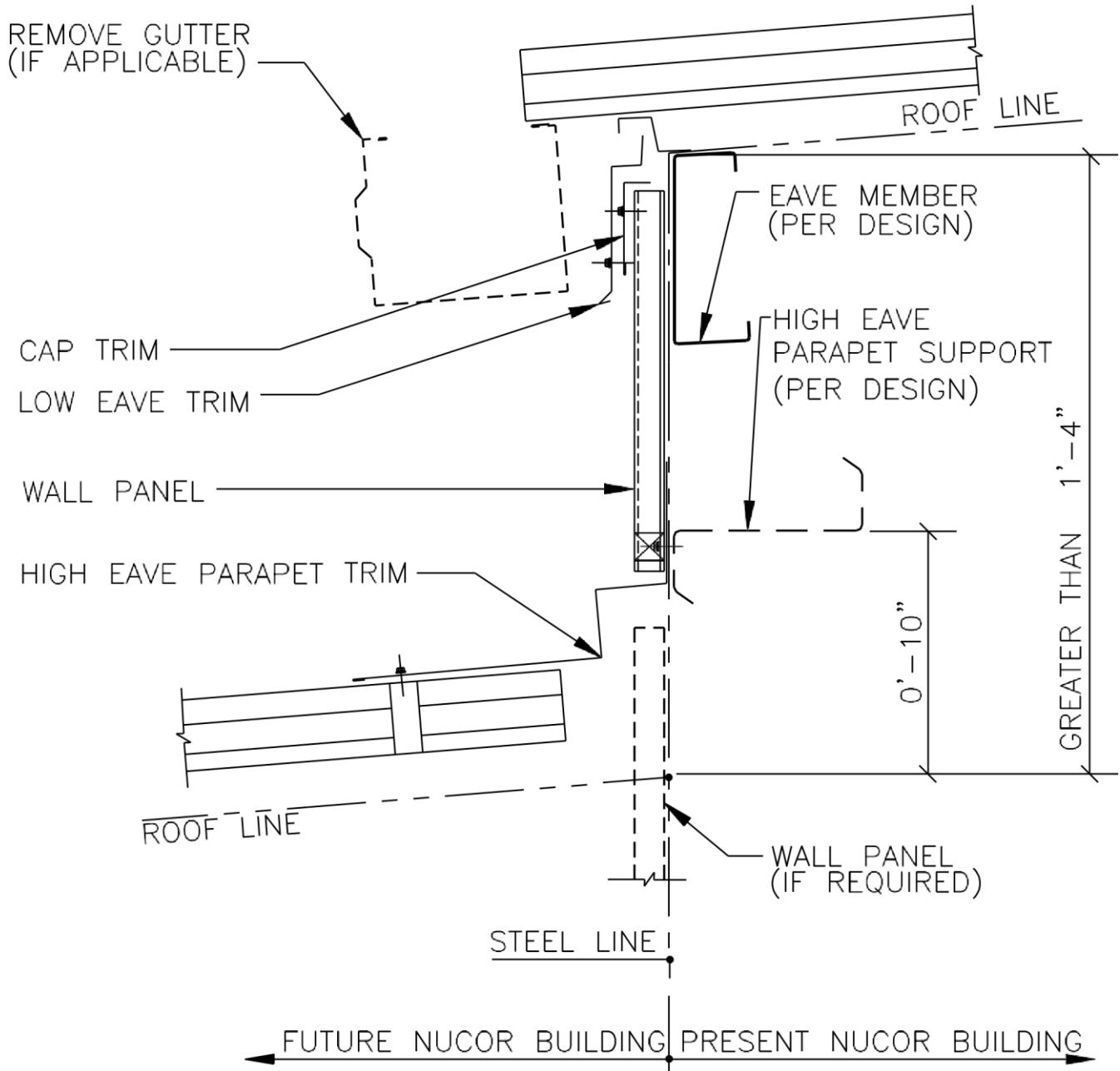
BY: CDM CHK: RJF

NAME IF APPLICABLE

4.8.45

FE0080PE.DWG





LAST REVISION DETAIL

DATE: 02/09/01

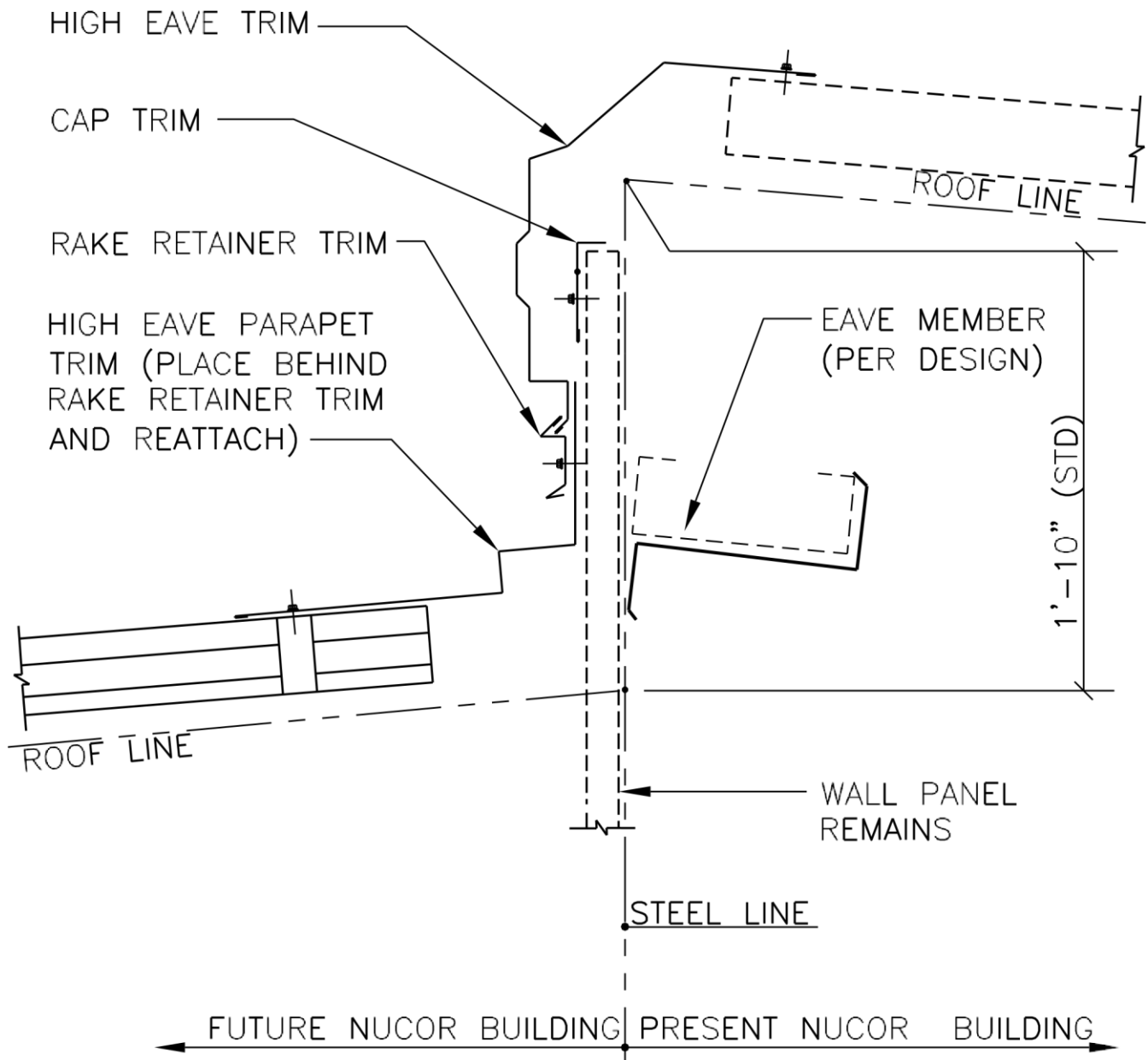
BY: CDM CHK: RJF

NAME IF APPLICABLE

4.8.47

FE0080PE.DWG

FE0120PE – HIGH EAVE FUTURE EXPANSION ROOF STEP (WALL PANEL REMAINS)

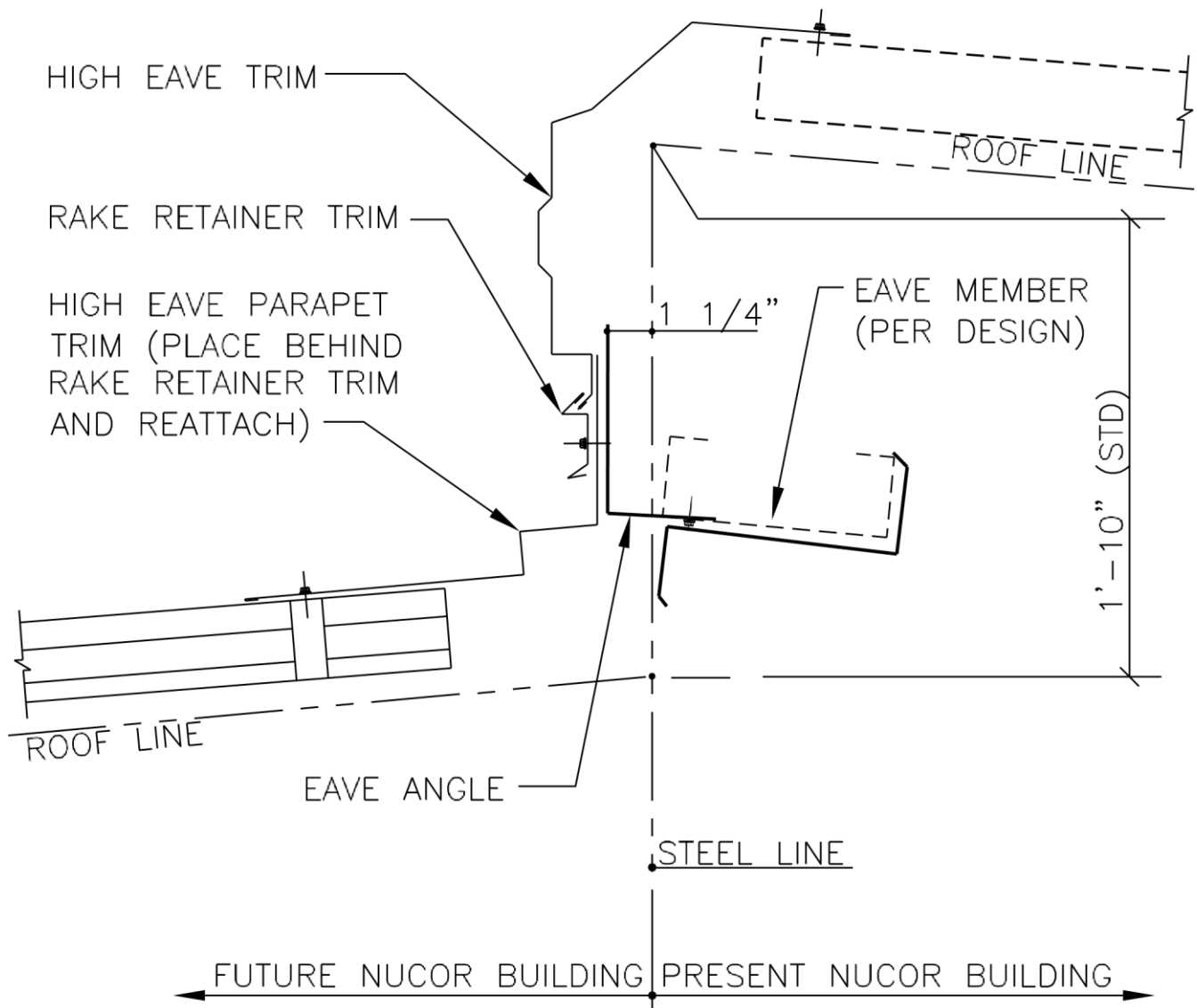


NAME IF

KMC

FE0120PE.DWG

FE0130PE – HIGH EAVE FUTURE EXPANSION ROOF STEP (WALL PANEL REMOVED)



LAST REVISION

DETAIL

APPLICABLE

DATE: 04/17/09 **4.8.49** BY: AES CHK:



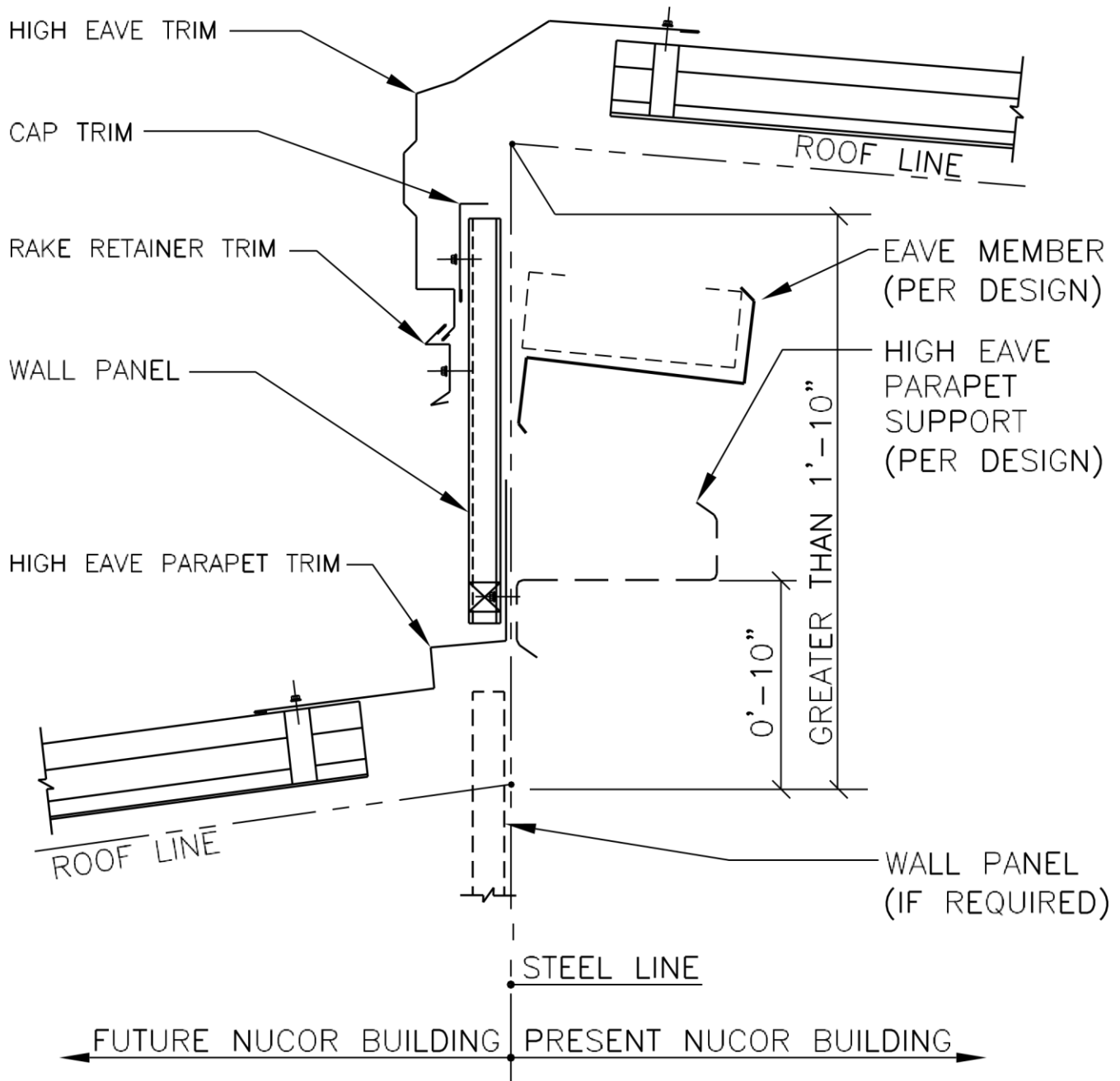
PRODUCT & ENGINEERING MANUAL

NAME IF

FE0130PE.DWG

FE0140PE – HIGH EAVE FUTURE EXPANSION (BELOW EAVE)

LAST REVISION	DETAIL	APPLICABLE
DATE: 04/17/09 4.8.50	BY: <u>AES</u>	CHK:





PRODUCT & ENGINEERING MANUAL

NAME IF

FE0130PE.DWG

LAST REVISION _____

DETAIL _____ APPLICABLE _____

DATE: 04/17/09 **4.8.52** BY: AES CHK: _____